

TOSCONOVA



OROSEI

CAT. LUSO
38%VI - 30%LI - 28%CO - 4%PL
Altezza/Width: 140cm
Peso/Weight: 890 gr/mtl
Martindale: 28.000 giri/cycles



PICO

CAT. LUSO
39%LI - 39%CO - 22%VI
Altezza/Width: 140cm
Peso/Weight: 1100 gr/mtl
Martindale: 30.000 giri/cycles



BELLARIA

CAT. LUSO
28%CO - 21%LI - 51%VI
Altezza/Width: 140cm
Peso/Weight: 673 gr/mtl
Martindale: 30.000 giri/cycles



PICO L02



OROSEI L02



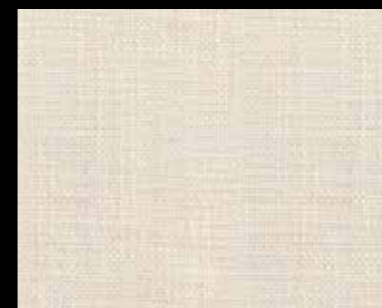
BELLARIA L15



BELLARIA L16



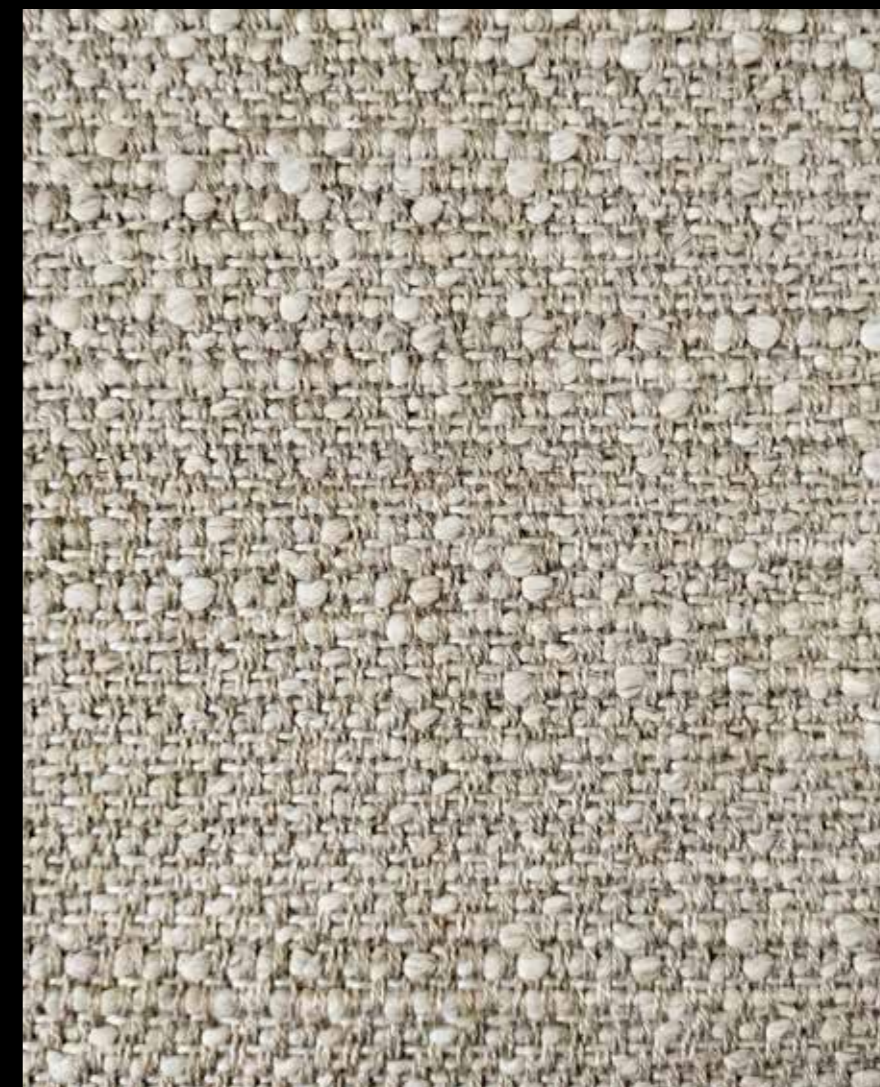
OROSEI L01



BELLARIA L08

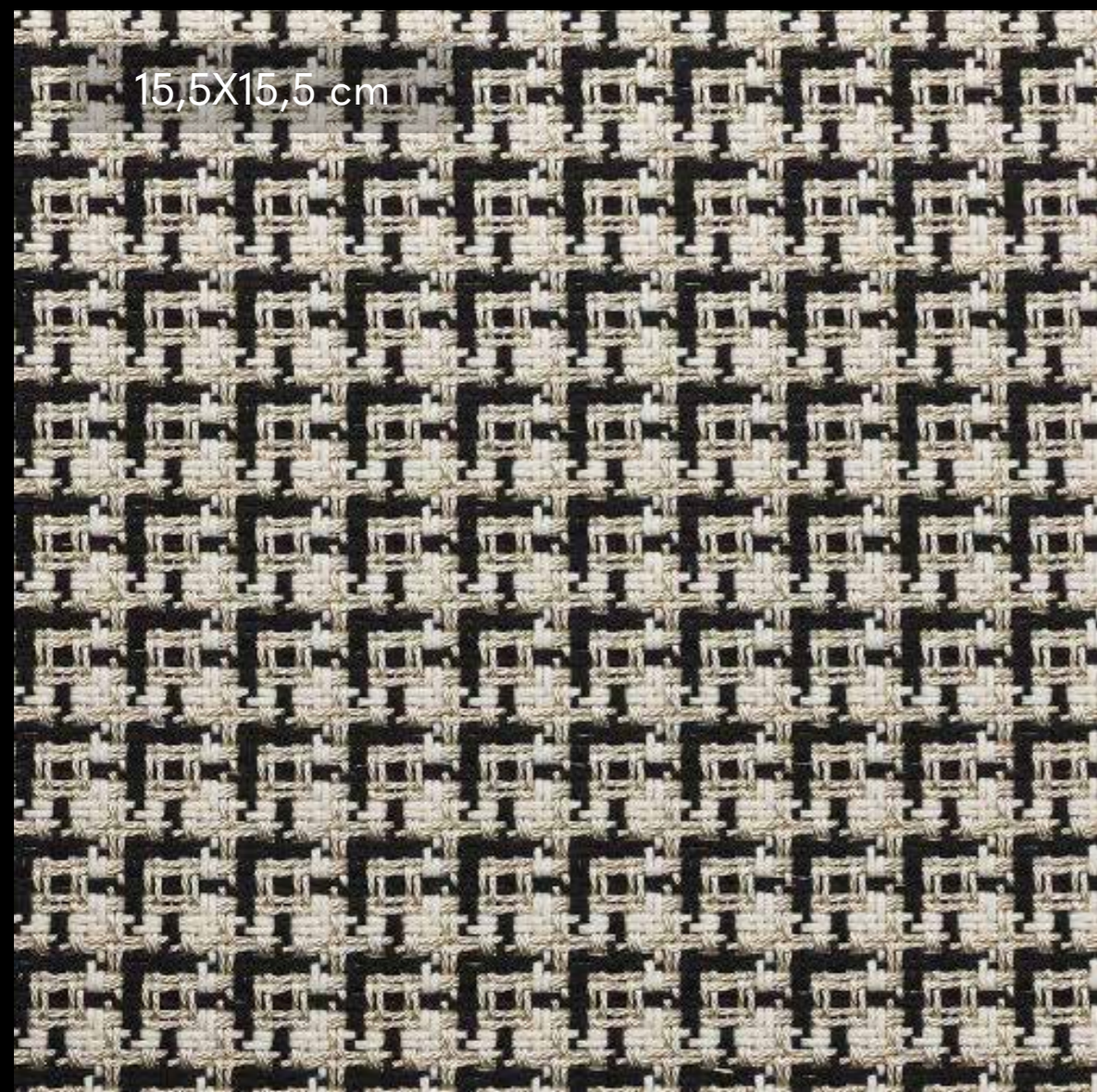


BELLARIA L01



PICO L01

TOSCONOVA





X03

CHERIE

CAT. LUXURY
50%CO - 50%PES
Altezza/Width: 140cm
Peso/Weight: 1300 gr/mtl
Martindale: 6.000 giri/cycles



TWIST AGAIN

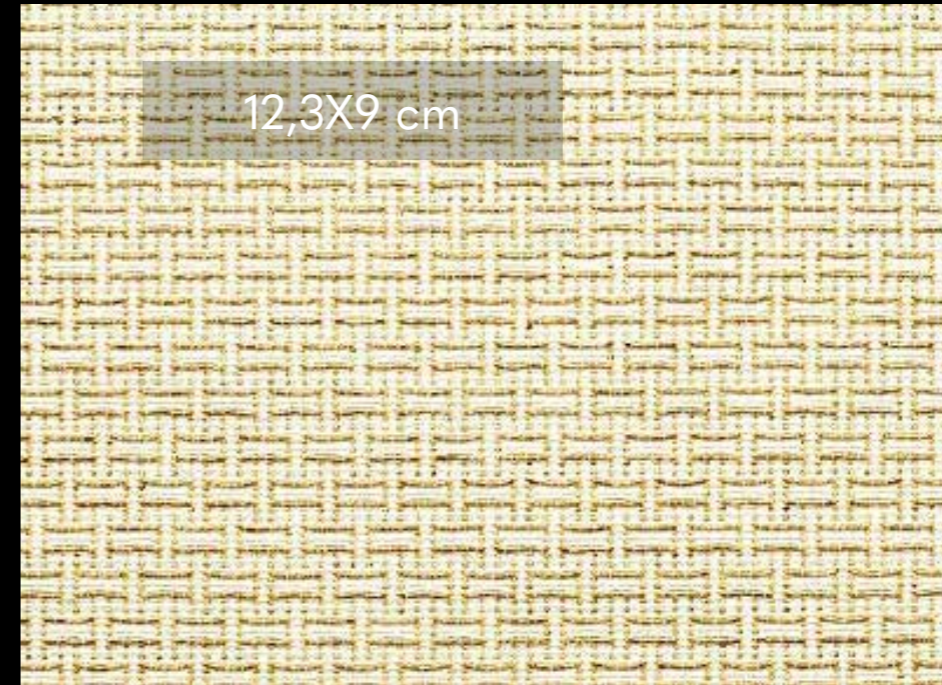
CAT. ROYAL
51%CO - 35%PES - 11%AF - 3%PA
Altezza/Width: 135cm
Peso/Weight: 830 gr/mtl
Martindale: 15.000 giri/cycles



R07



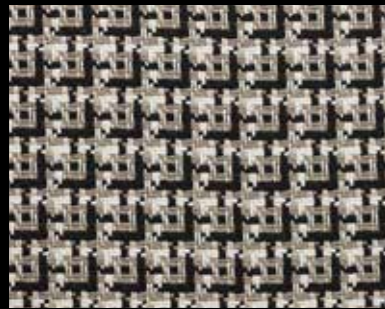
X05



R08



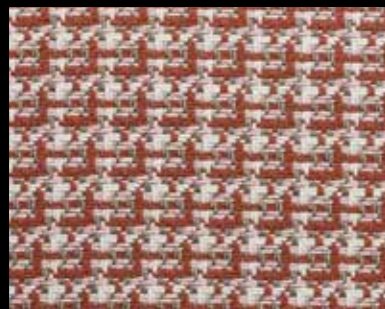
R03



X02



R06



X04



R04

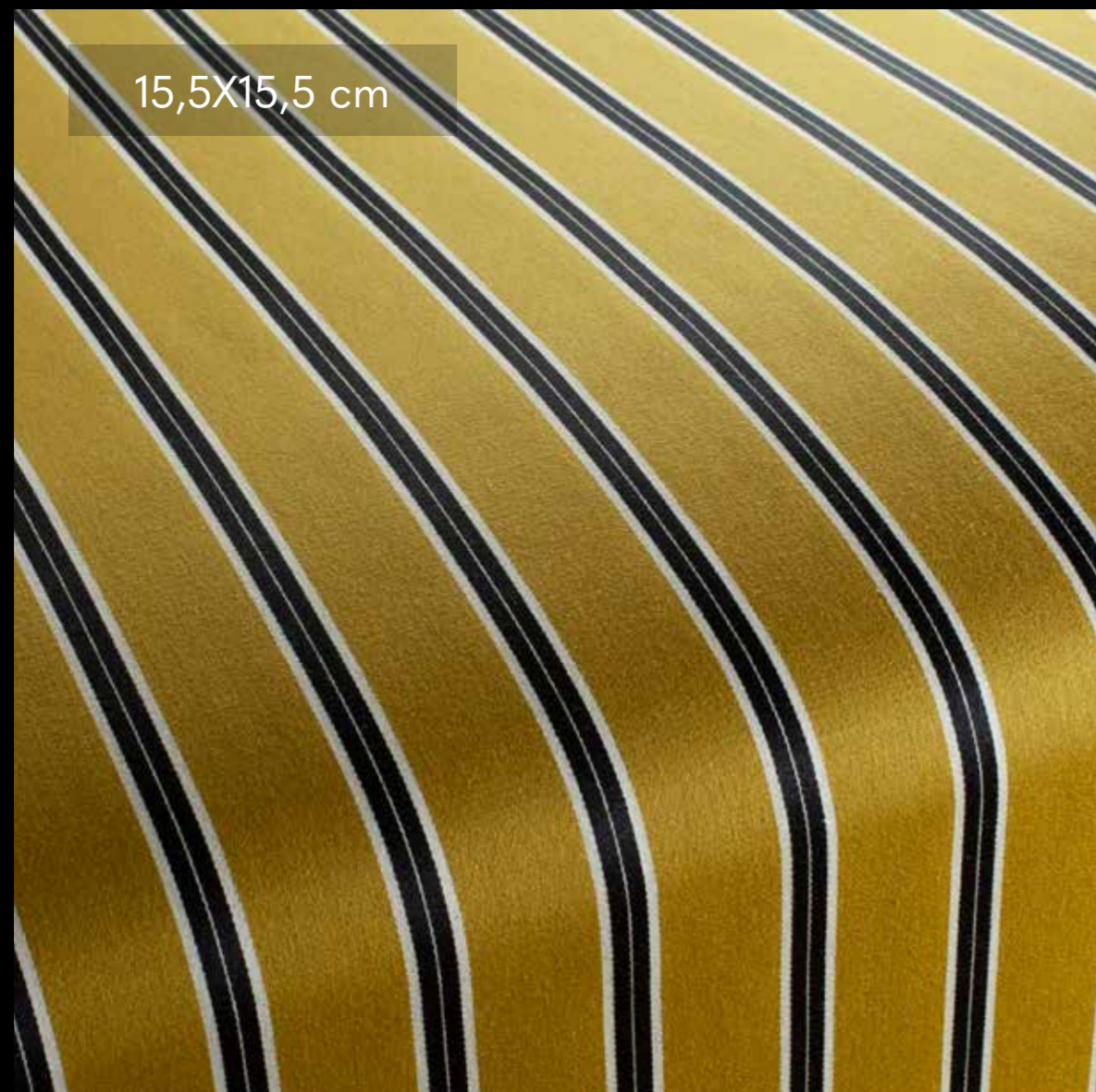


R05



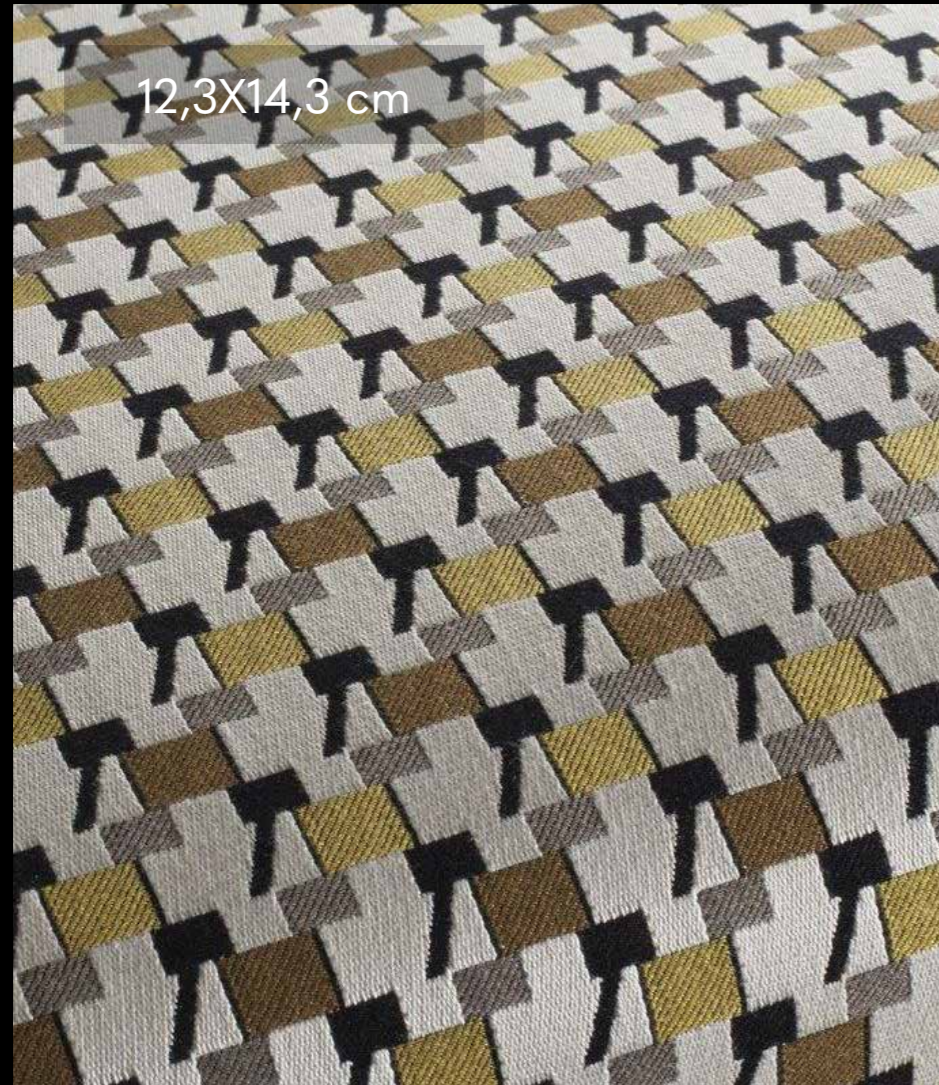
R10

TOSCONOVA



CORTINA

CAT. IN
85%VI - 15%PL
Altezza/Width: 140cm
Peso/Weight: 840 gr/mtl
Martindale: 30.000 giri/cycles



140



160



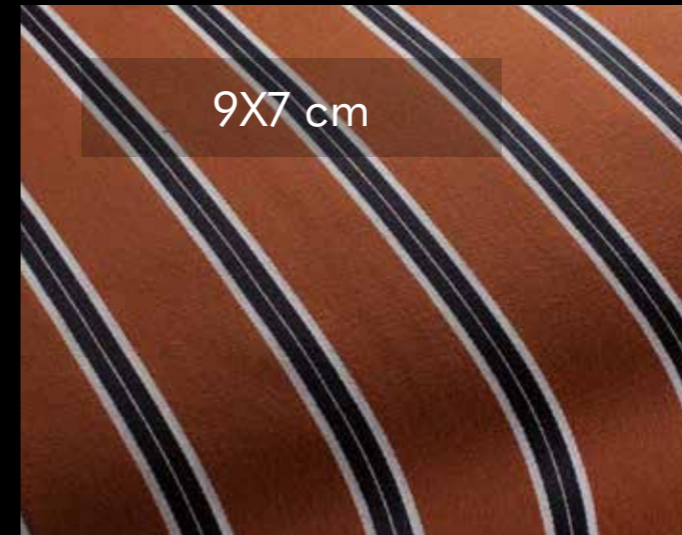
130



191



180



E61



E20

LOIRA

CAT. ELITE
84%CO - 16%VI
Altezza/Width: 145cm
Peso/Weight: 490 gr/mtl
Martindale: 30.000 giri/cycles



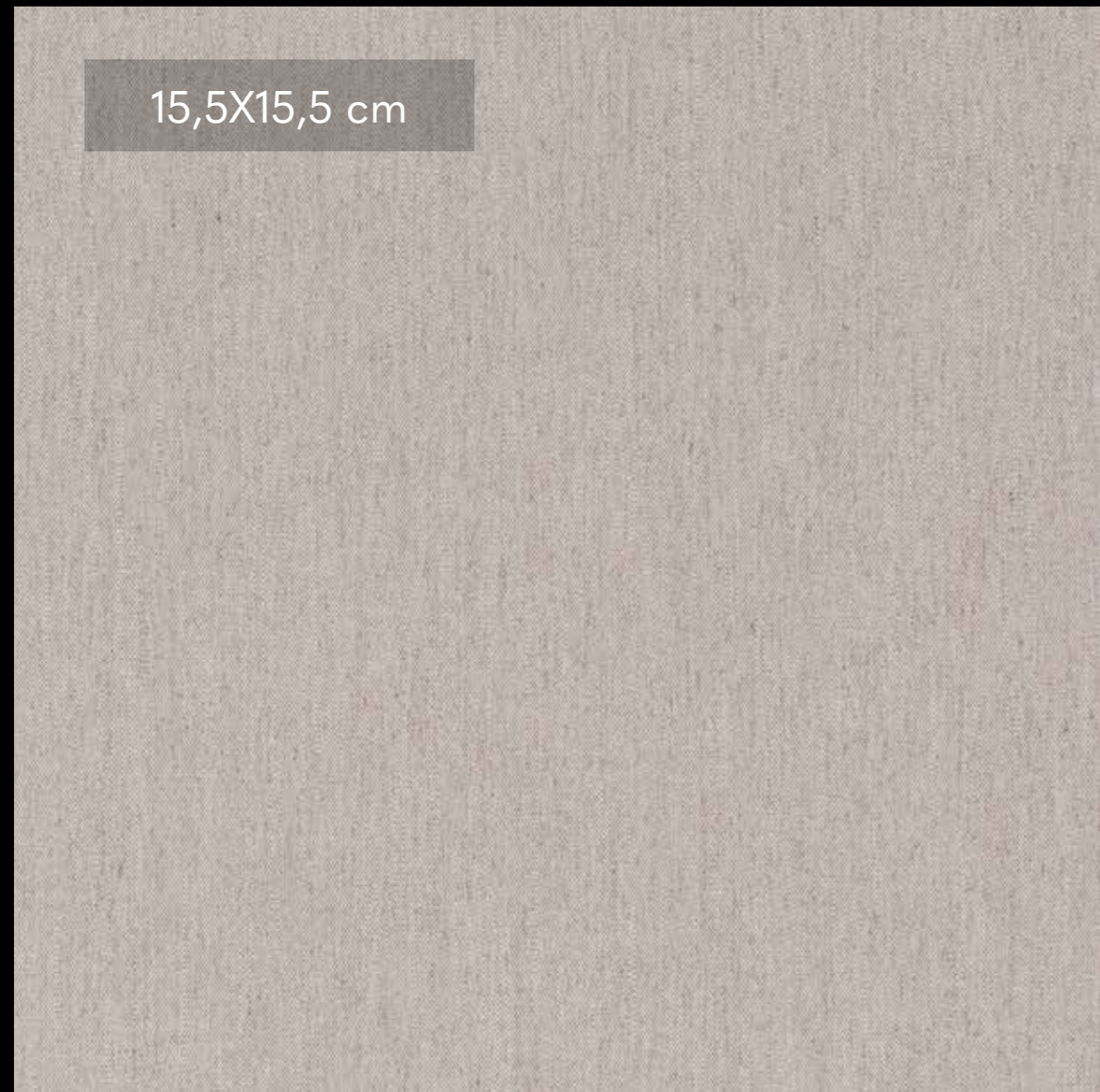
E50



E30

TOSCONOVA

15,5X15,5 cm





E92



E40



E60

MASUA

CAT. ELITE
52%CO - 32%VI - 12%LI - 4PL%
Altezza/Width: 140cm
Peso/Weight: 827 gr/ml
Martindale: 35.000 giri/cycles



E71



E94



E32



E61



E20



E92



E83



E20



E11



E94



E51



E99

SINIS

CAT. ELITE
46%VI - 36%CO - 16%LI - 2%PL
Altezza/Width: 140cm
Peso/Weight: 648 gr/ml
Martindale: 30.000 giri/cycles



E32



E61



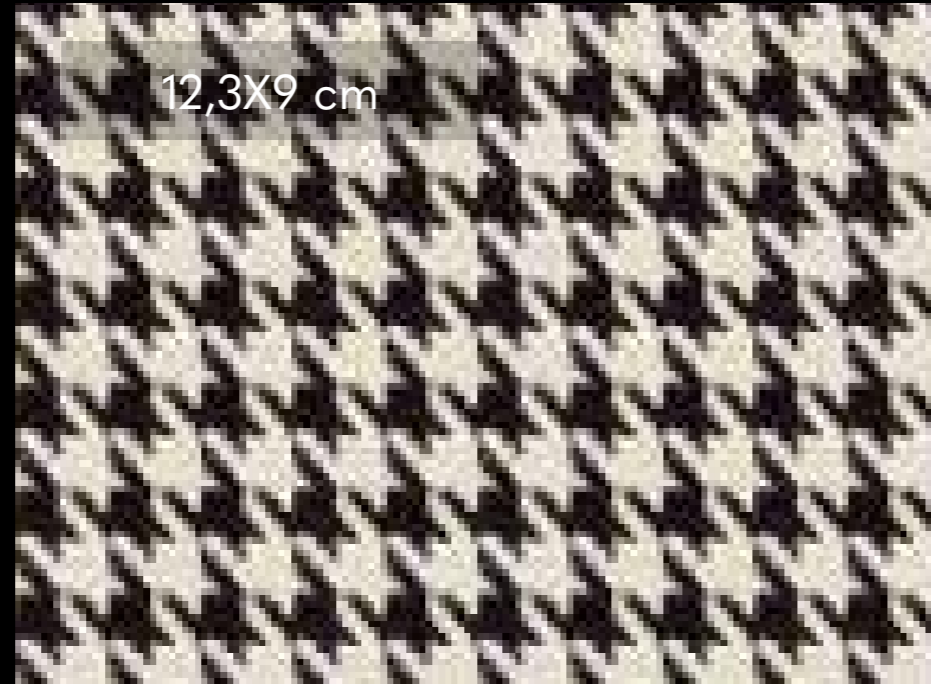
E51

TOSCONOVA



SIRMIONE

CAT. ELITE
29%VI - 71%PL
Altezza/Width: 150cm
Peso/Weight: 725 gr/mtl
Martindale: 50.000 giri/cycles



SIRMIONE E01

MOENA

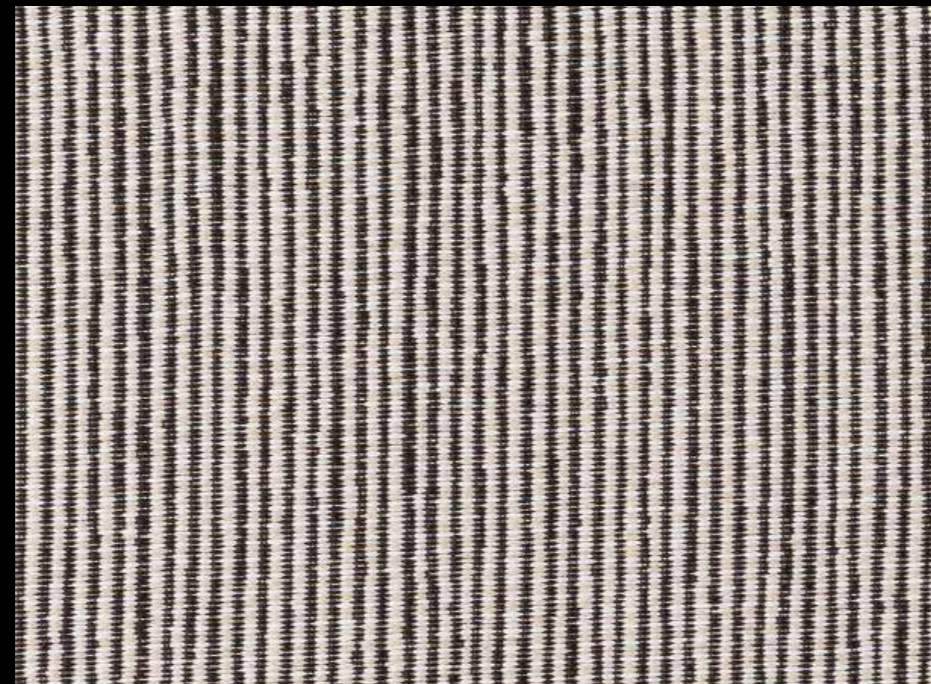
CAT. ELITE
75%VI - 25%PL
Altezza/Width: 135cm
Peso/Weight: 660 gr/mtl
Martindale: 25.000 giri/cycles



MOENA E01

CAVALESE

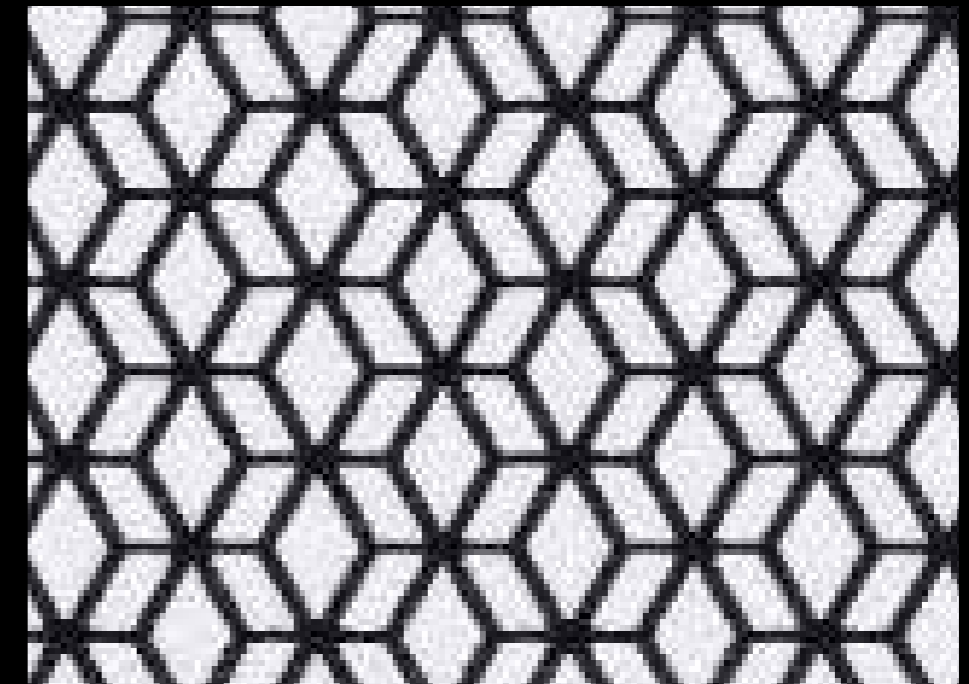
CAT. ELITE
100%PL
Altezza/Width: 135cm
Peso/Weight: 557gr/mtl
Martindale: 30.000 giri/cycles



CAVALESE E01

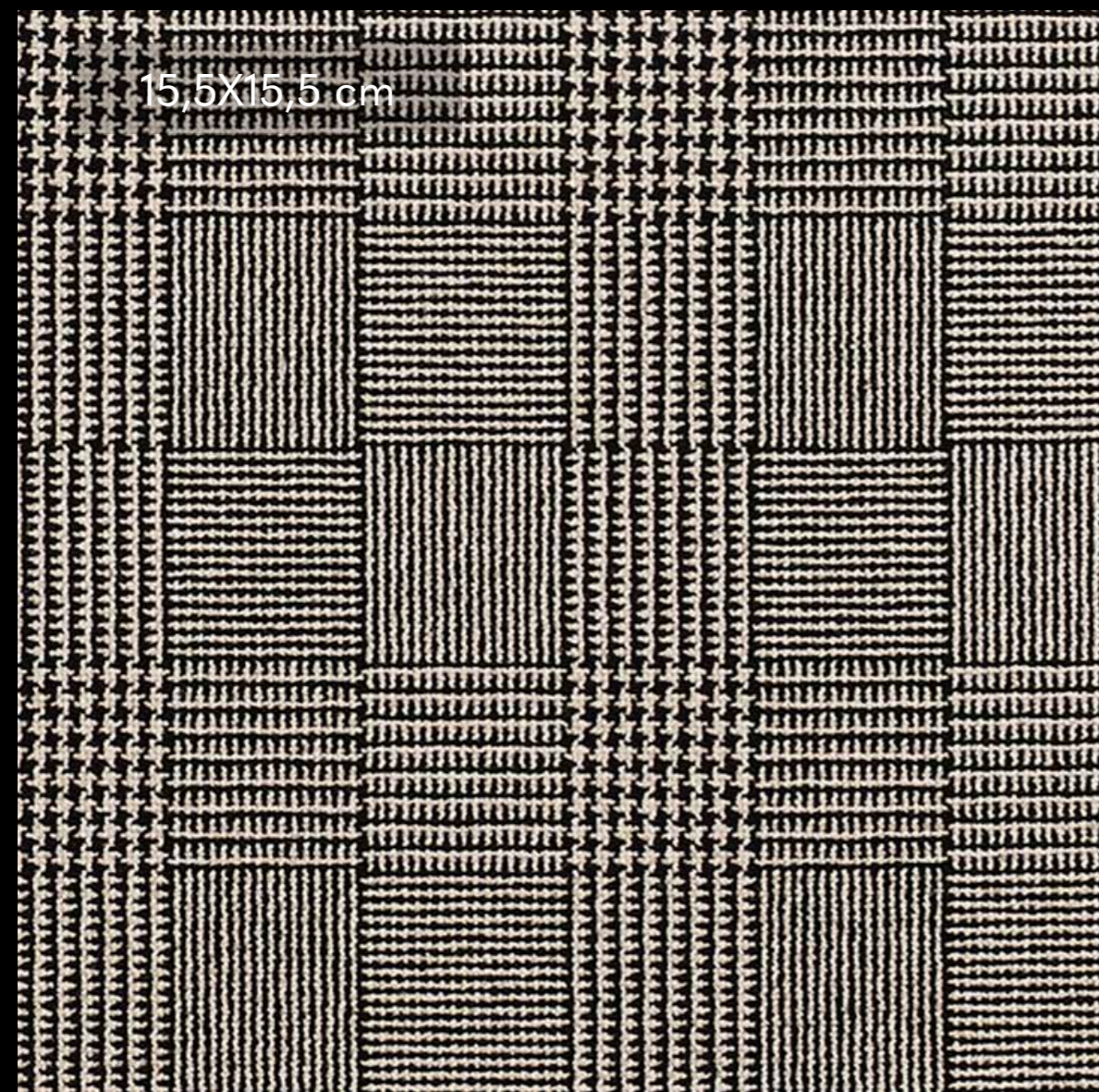
MERANO

CAT. ELITE
72%VI - 28%PL
Altezza/Width: 135cm
Peso/Weight: 637 gr/mtl
Martindale: 30.000 giri/cycles



MERANO E01

TOSCONOVA



15,5X15,5 cm



BITTI

CAT. IN

32%VI - 28%PAN - 20%CO - 20%PL

Altezza/Width: 140cm

Peso/Weight: 927 gr/mtl

Martindale: 30.000 giri/cycles



BITTI
I01

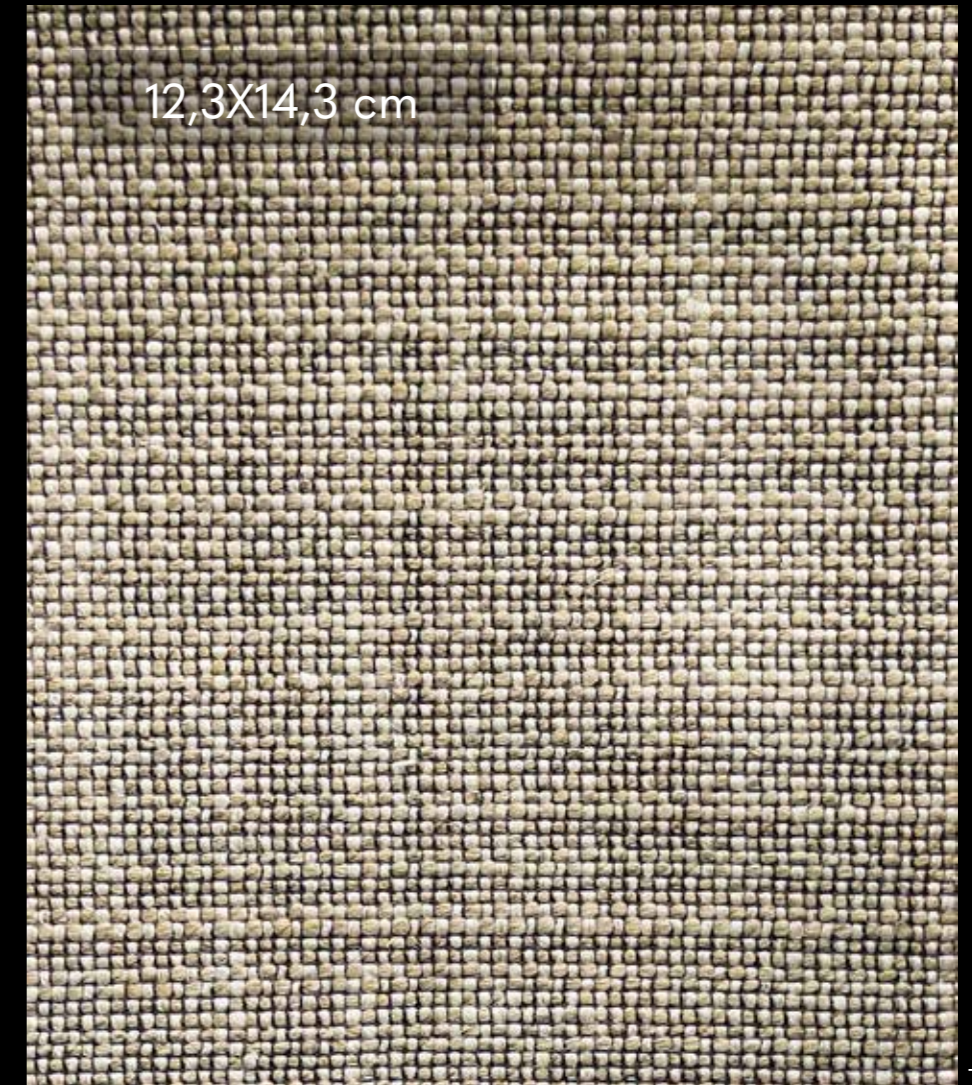
TWIGA

CAT. LUSO

41%VI - 39%LI - 20%PL

Altezza/Width: 140cm

Peso/Weight: 830 gr/mtl



TWIGA E01

CAMPIGLIO

CAT. ELITE

58%VI - 19%CO - 23%PL

Altezza/Width: 140cm

Peso/Weight: 634 gr/mtl

Martindale: 30.000 giri/cycles



GARDA

CAT. ELITE

45%VI - 33%CO - 22%PL

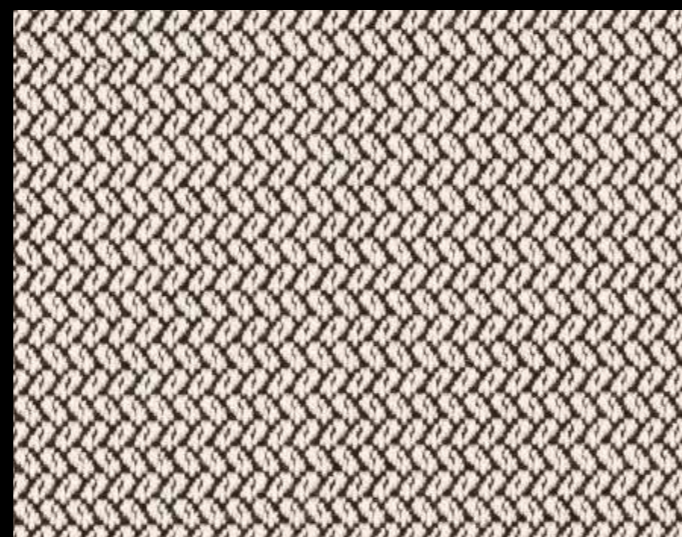
Altezza/Width: 140cm

Peso/Weight: 747 gr/mtl

Martindale: 25.000 giri/cycles



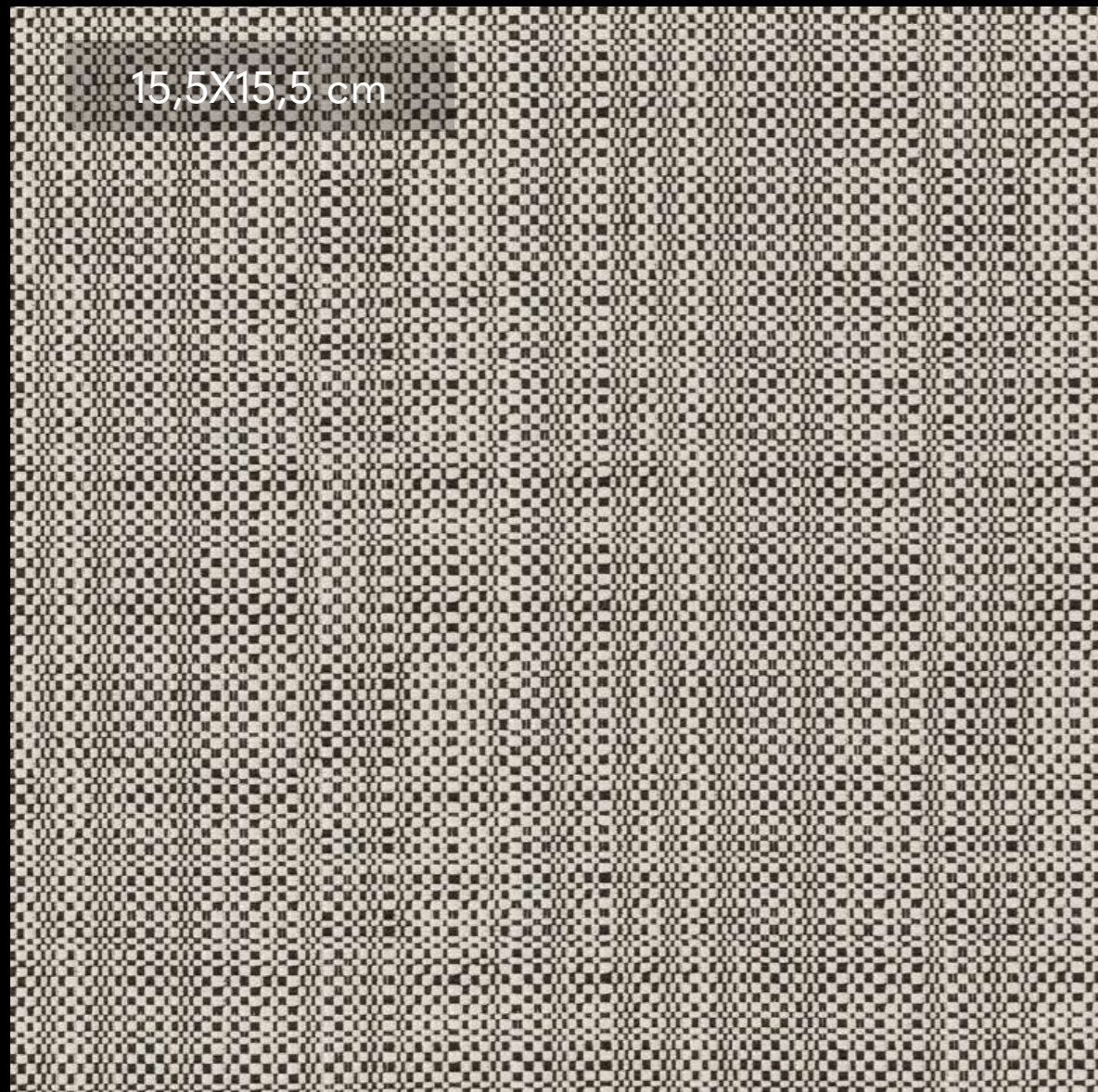
CAMPIGLIO
E01

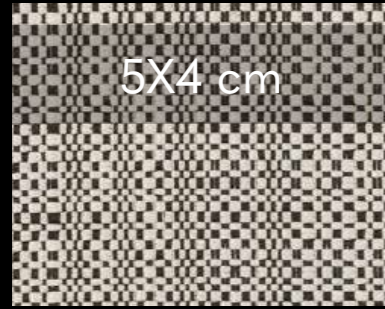


GARDA
E01

TOSCONOVA

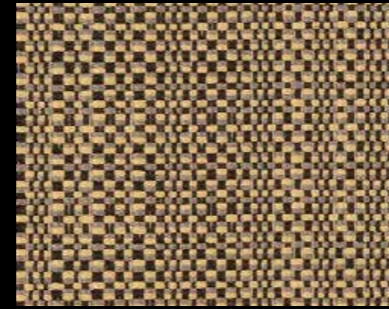
15,5X15,5 cm





5X4 cm

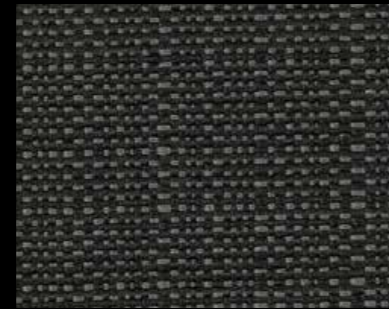
E01



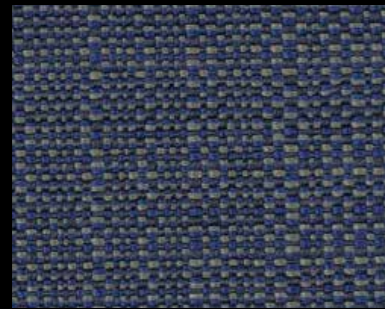
E06



E02



E04



E05



E03

CLIMA

CAT. ELITE

68%PA - 18%WO - 14%VI

Altezza/Width: 141cm

Peso/Weight: 538 gr/mtl

Martindale: 500.000 giri/cycles



CLIMA è un tessuto con microstruttura con caratteristiche uniche.

Fibre naturali e sintetiche vengono intrecciate per creare un effetto capillare nel tessuto. I capillari assorbono rapidamente l'umidità e la drenano. La superficie rimane asciutta. Trasmettono la sensazione di un piacevole calore o di una freschezza a seconda della stagione. I tessuti con effetti di riscaldamento e raffreddamento bilanciano le diverse temperature della stanza rilasciando un parallelo aumento della sensazione di benessere senza l'utilizzo di energia. Ciò a sua volta significa una riduzione dell'energia utilizzata per il riscaldamento o il raffreddamento.

Con la loro struttura intelligente di materie prime rinnovabili e rigenerate, il tessuto Clima contribuisce al futuro dell'ambiente.

Altissima resistenza.

Elevata resistenza alla luce.

Nessun uso di materiali cancerogeni, mutageni ed allergeni.

CLIMA is a fabric with microstructure with unique features.

Natural and synthetic fibers are woven to create a capillary effect in the tissue. The capillaries quickly absorb moisture and drain it. The surface remains dry. They convey the feeling of a pleasant warmth or freshness depending on the season. The fabrics with heating and cooling effects balance the different temperatures of the room releasing a parallel increase in the feeling of well-being without the use of energy. This in turn means a reduction in the energy used for heating or cooling.

With their intelligent structure of renewable and regenerated raw materials, the Clima fabric contributes to the future of the environment.

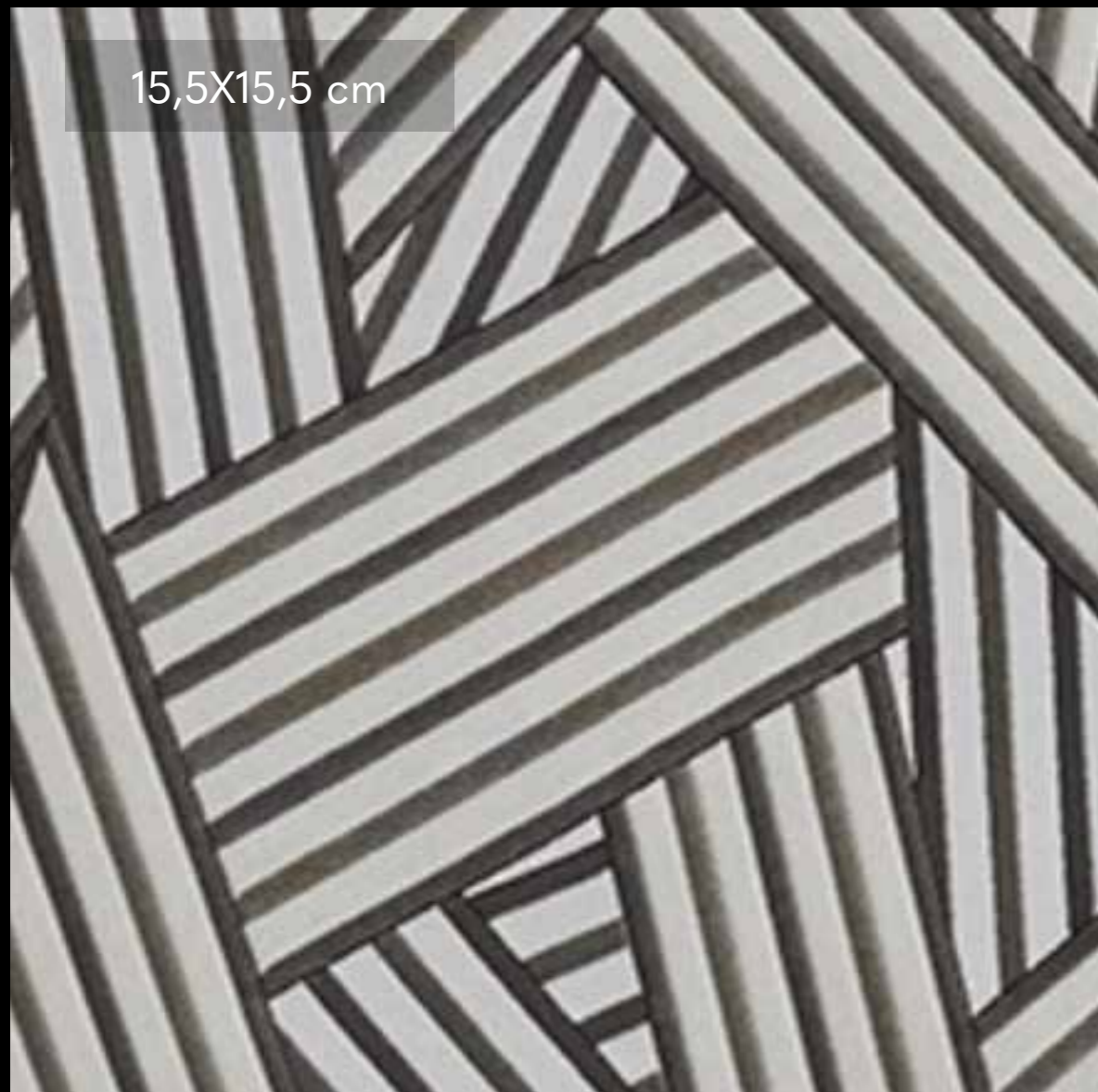
Very high resistance.

High resistance to light.

No use of carcinogenic, mutagenic and allergenic materials.

TOSCONOVA

15,5X15,5 cm





X05

SHORT-CUTS

CAT. LUXURY
70%CO - 30%PES
Altezza/Width: 144cm
Peso/Weight: 580 gr/mtl
Martindale: 5.000 giri/cycles



KIEVAN

CAT. LUXURY
68%PES -28%CO - 4%PA
Altezza/Width: 135 cm
Peso/Weight: 690 gr/mtl
Martindale: 18.000 giri/cycles



X02



X04



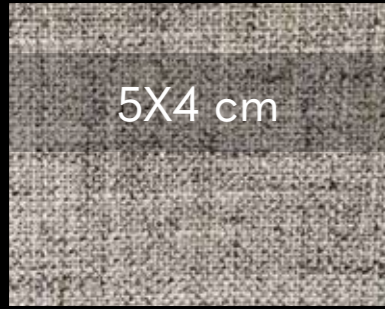
X03



X01

TOSCONOVA





5X4 cm

L01



L14



L07

CANAZEI

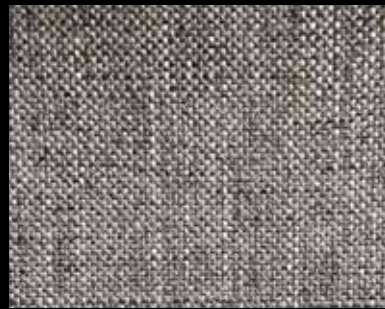
CAT. LUSO
70%VI - 30%LI
Altezza/Width: 140cm
Peso/Weight: 540 gr/mtl
Martindale: 25.000 giri/cycles



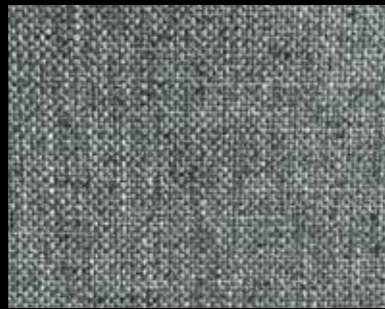
L06



L13



L03



L08



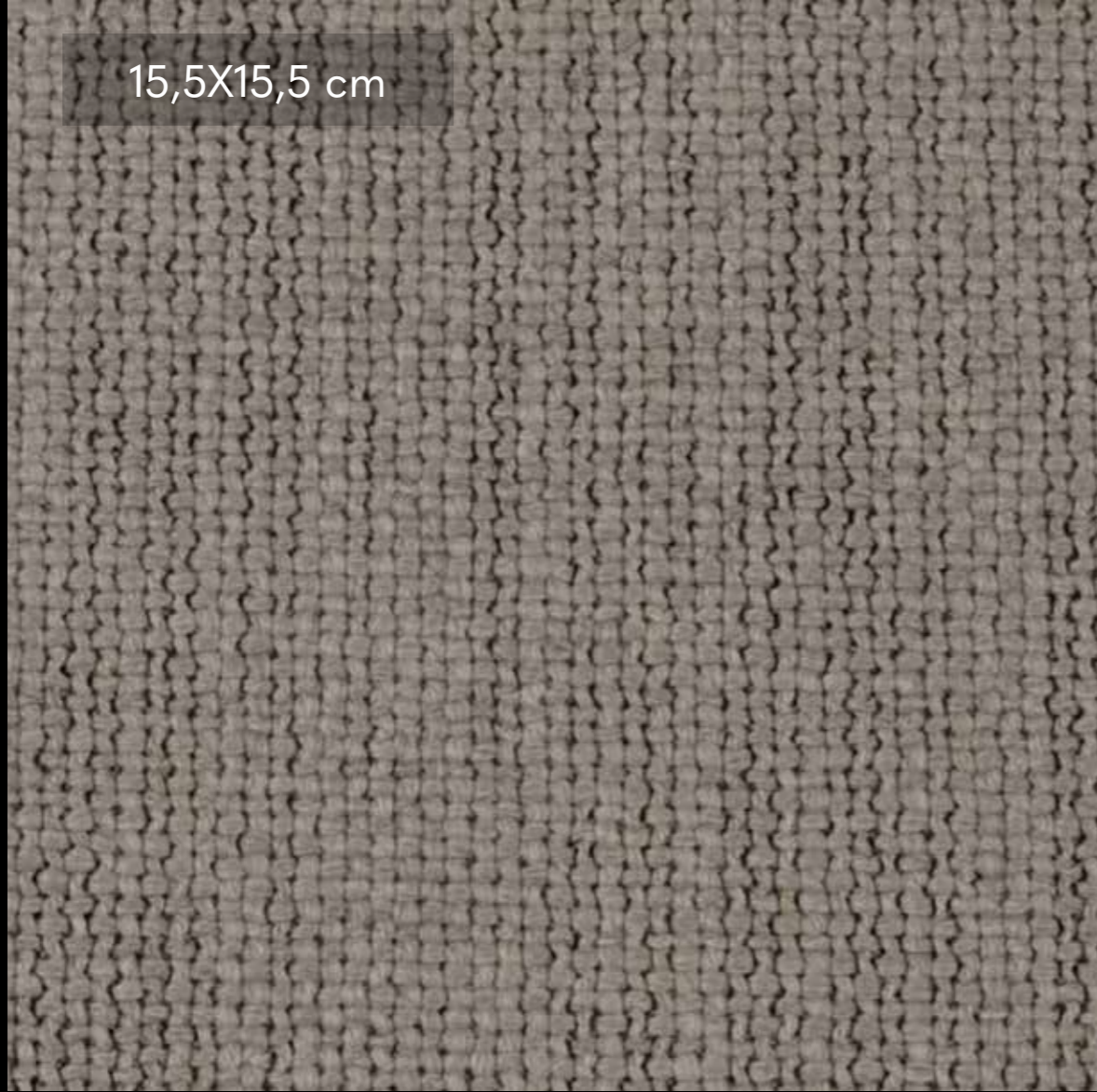
L04

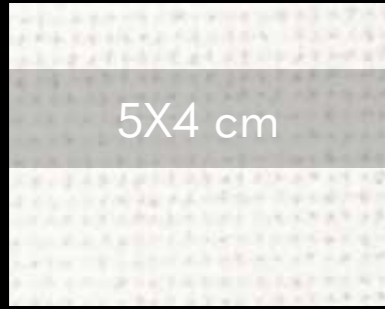


L10

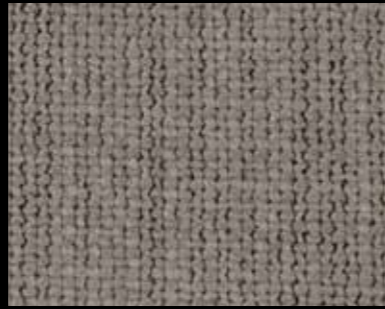
TOSCONOVA

15,5X15,5 cm





L07



L03



L19



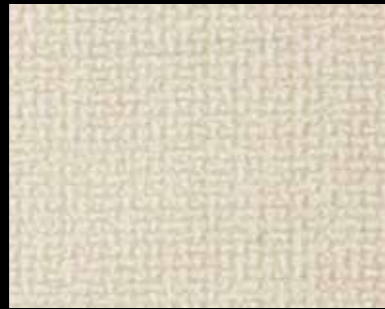
L09



L12

MAYA

CAT. LUSSO
42%VI - 38%CO - 14%PC - 6%PL
Altezza/Width: 140cm
Peso/Weight: 1022 gr/mtl
Martindale: 30.000 giri/cycles



L26



L02



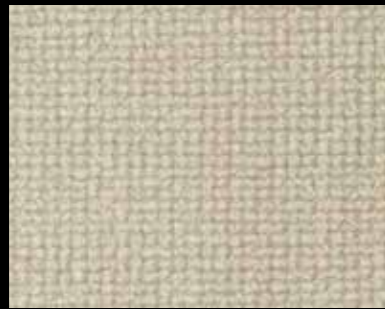
L25



L29



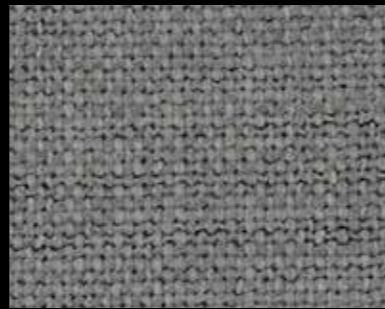
L01



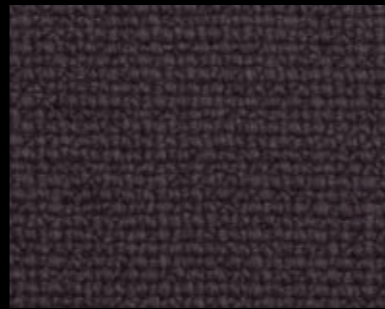
L28



L05



L08



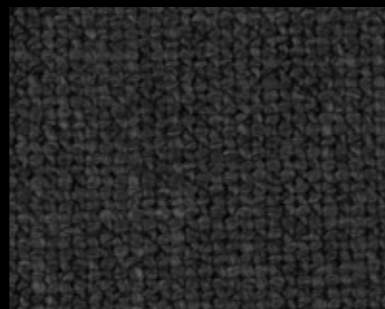
L16



L30



L06



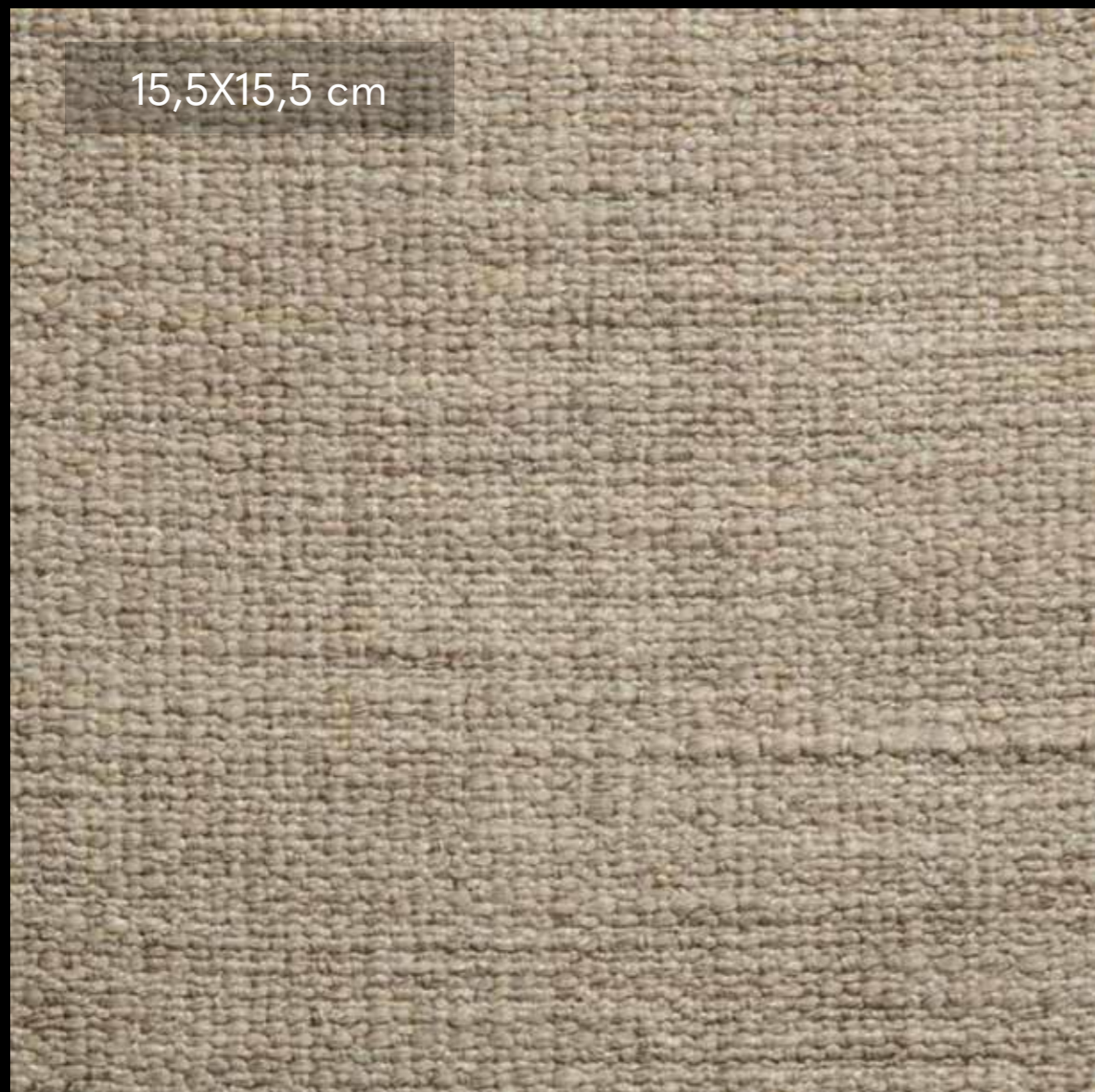
L11

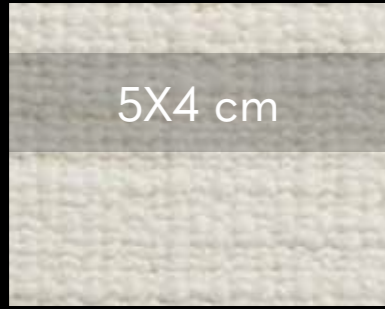


L21

TOSCONOVA

15,5X15,5 cm



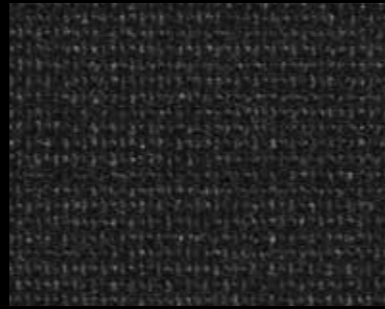


5X4 cm

E01



E04



E10

LUGANO

CAT. ELITE
33%PC - 25%VI - 17%WO - 14%PL
11%CO
Altezza/Width: 140cm
Peso/Weight: 1120gr/mtl
Martindale: 30.000 giri/cycles



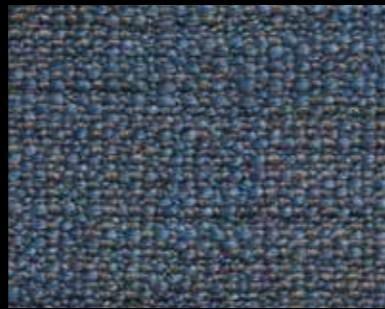
E03



E09



E05



E81



E02



E91

TOSCONOVA

15,5X15,5 cm



5X4 cm

L02

L06

L08

L13

L03

L16

L09

L10

L04

L15

L12

L05

L07

L11

STELVIO

CAT. LUSO

64%PU - 20%PL - 16%CO

Altezza/Width: 140cm

Peso/Weight: 540 gr/mtl

Martindale: 100.000 giri/cycles

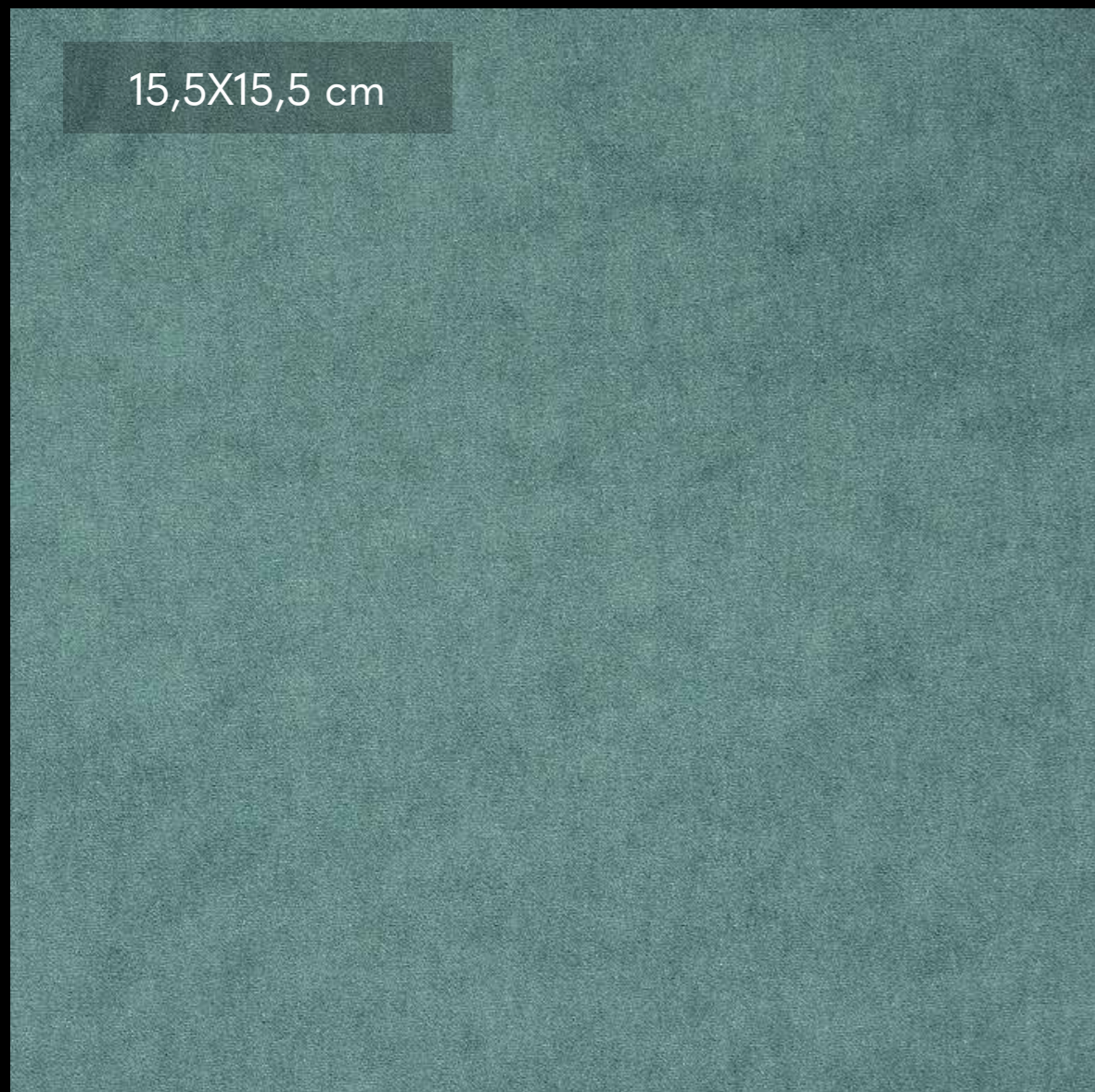
Protezione antimicrobica antibatterica.
Materiale prodotto senza utilizzo di
orto ftalati.

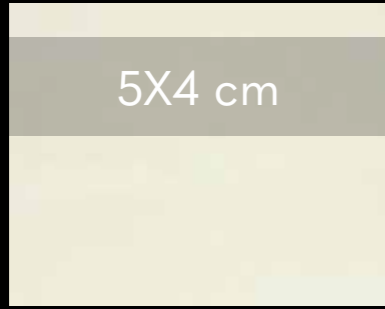
Antimicrobial protection.
Ortho Phthalate Free.



TOSCONOVA

15,5X15,5 cm





L25



L34



L06



L08

PITTI

CAT. LUSO

50%PL - 50%CO

Altezza/Width: 140cm

Peso/Weight: 600 gr/mtl

Martindale: 70.000 giri/cycles



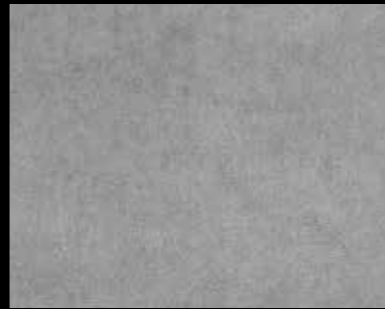
L04



L23



L05



L11



L29



L28



L18



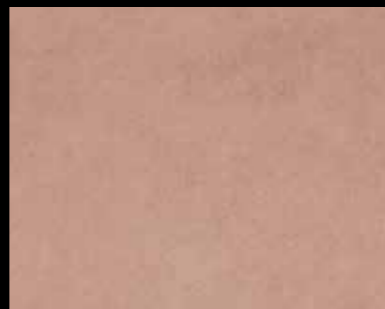
L16



L37



L17



L12

TOSCONOVA



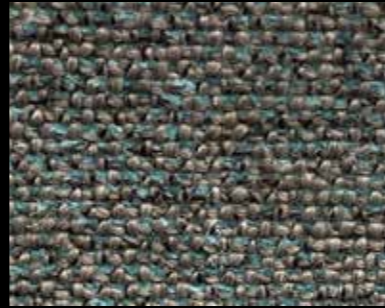


5X4 cm

L11



L01



L10

ETRUSCO

CAT. LUSO
36%CO - 26%PC - 16%VI - 10%PA
7%WO - 5%LI
Altezza/Width: 150cm
Peso/Weight: 915 gr/mtl
Martindale: 35.000 giri/cycles



L31



L18



L21



L51



L22

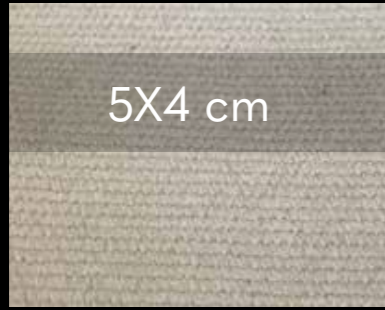


L23

TOSCONOVA

15,5X15,5 cm





L02



L13

CANEPA

CAT. LUSO
63%CO - 29VI% - 8%PL
Altezza/Width: 140 cm
Peso/Weight: 855 gr/mtl
Martindale: 50.000 giri/cycles



L20



L08



L22



L09



L24



L07

TOSCONOVA





5X4 cm

E01



E12



E06



E05

GUBBIO

CAT. ELITE

33% VI - 29% PC - 15%WO - 8% CO

7% PL - 6% LI - 1% PA - 1% EL

Altezza/Width: 140cm

Peso/Weight: 880 gr/mtl

Martindale: 50.000 giri/cycles



E02



E11



E07



E03



E10



E08



E13



E09

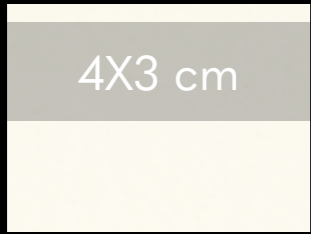


E04

TOSCONOVA

15,5X15,5 cm





E01



E29



E17



E13



E32



E99

GIOTTO

CAT. ELITE

100%CO

Altezza/width: 140cm

Peso: 620 gr/mtl

Martindale: 65.000 giri/cycles



E03



E28



E20



E97



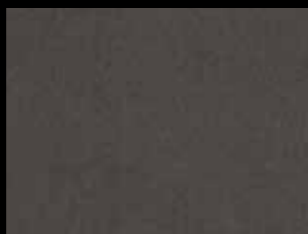
E19



E40



E23



E10



E14



E06



E38



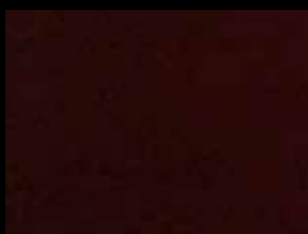
E09



E12



E26



E27



E21



E15



E22



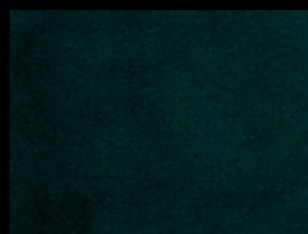
E35



E08



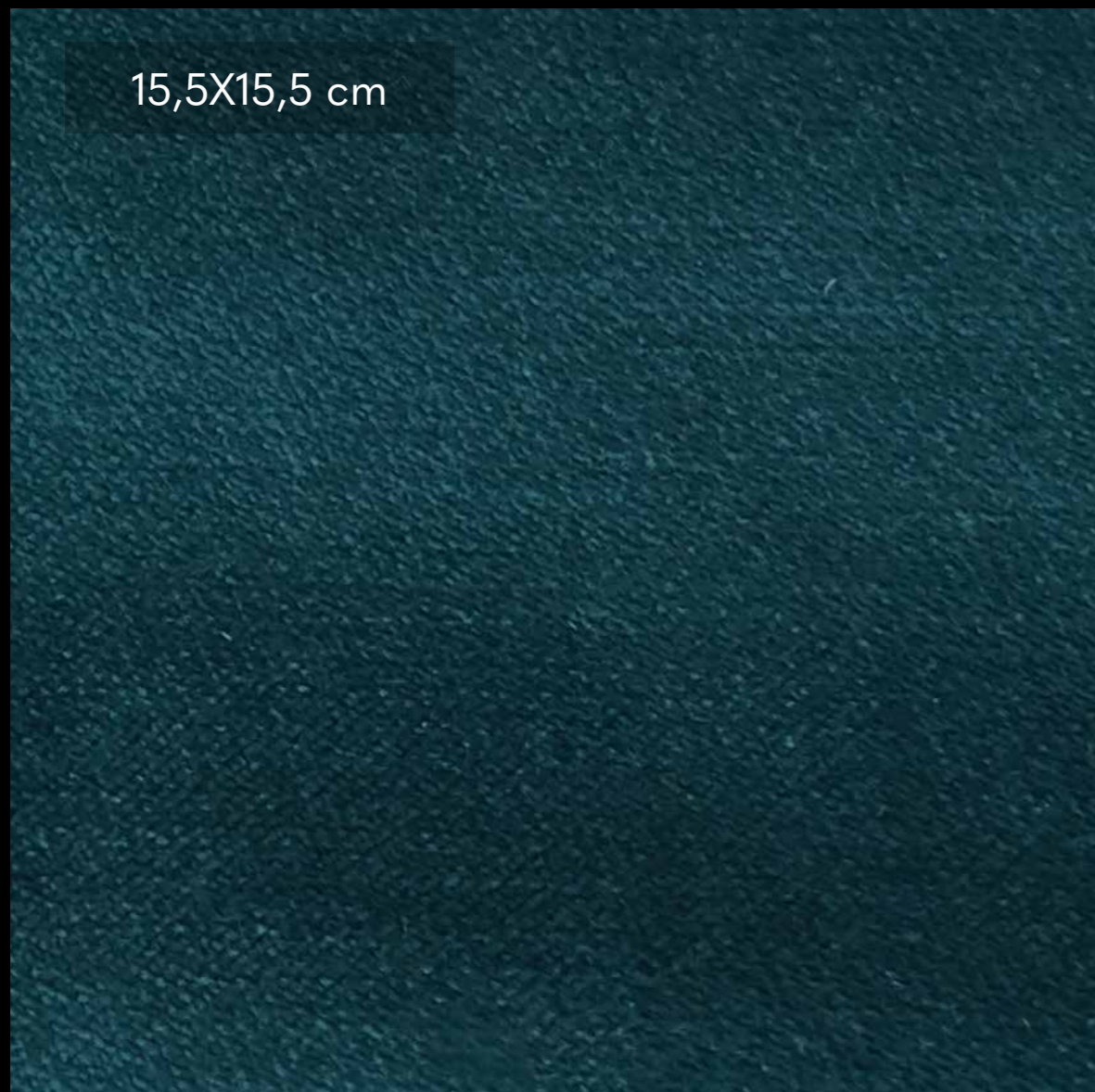
E54



E31

TOSCONOVA

15,5X15,5 cm



4X3 cm

L02



L35



L27



L29

BELLAGIO

CAT. LUSO

100% PL

Altezza/Width: 140cm

Peso/Weight: 561 gr/mtl

Martindale: 50.000 giri/cycles



L13



L43



L26



L31

L04



L47



L21



L25

L06



L10



L16

L14



L17

L19

TOSCONOVA

15,5X15,5 cm



4X3 cm

104



113



103



102

FIRENZE

CAT. IN

Pile: 100%PAN - Ground 100%PL

Altezza/Width: 140cm

Peso/Weight: 445 gr/mtl

Martindale: 100.000 giri/cycles

Non applicare sul tessuto

fonti di calore

Do not put sources of heat

on the fabric



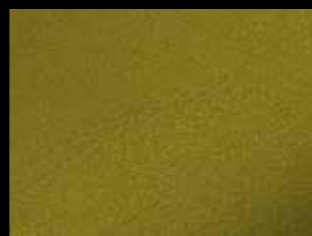
105



112



101



114



106



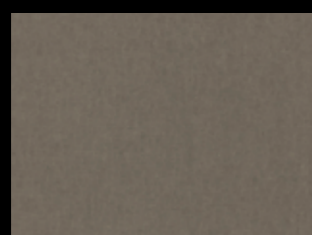
110



107



115



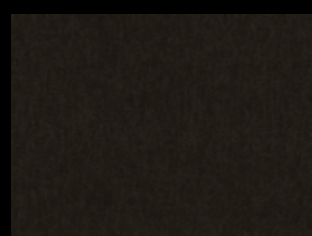
117



111



108



116



118

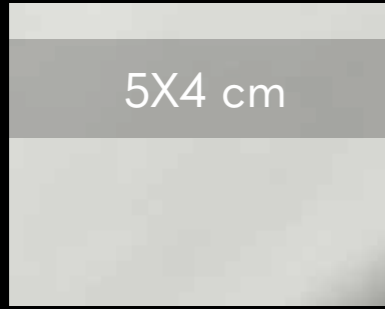


109

TOSCONOVA

15,5X15,5 cm

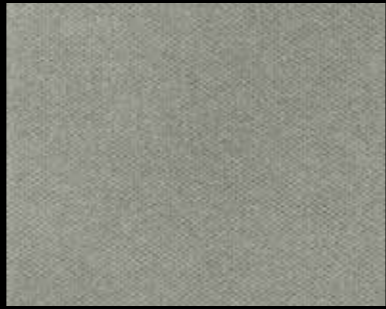




L07



L09



L08



L05



L11

POETTO

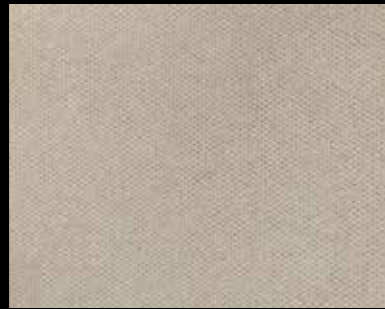
CAT. LUSO

100%PL

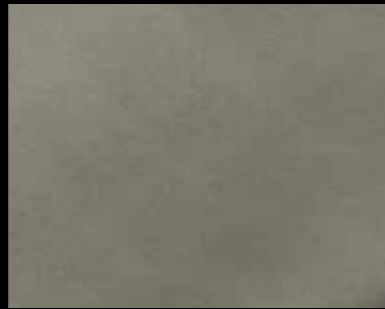
Altezza/Width: 140cm

Peso/Weight: 310 gr/mtl

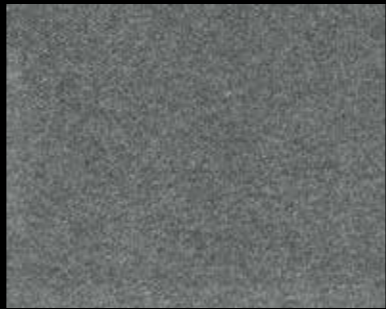
Martindale: 47.000 giri/cycles



L06



L14



L18



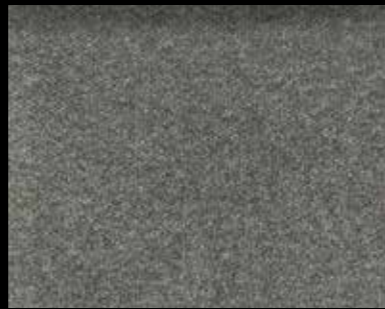
L04



L10



L01



L13



L17



L02



L12



L15

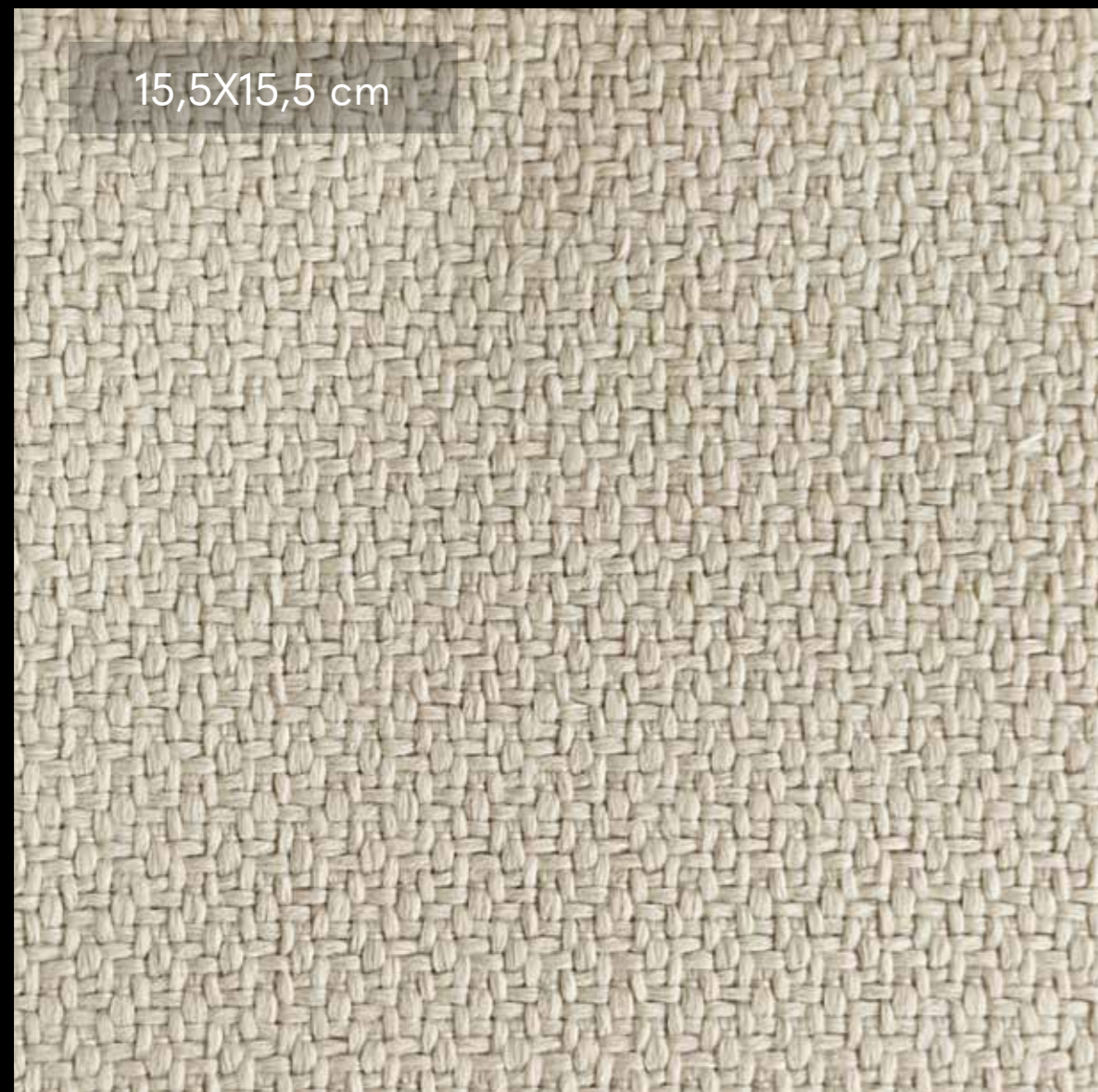


L16



L03

TOSCONOVA





5X4 cm

E06



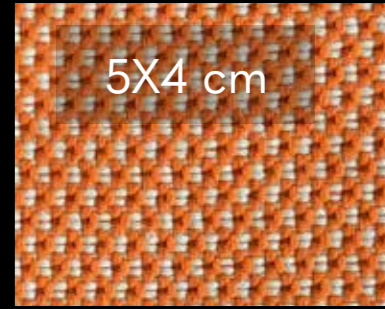
E07



E02

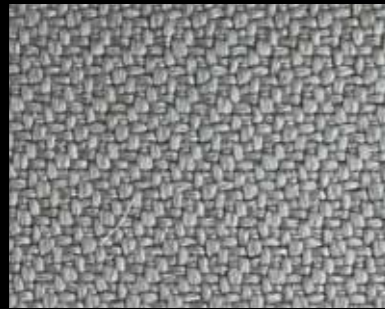
ISCHIA

CAT. ELITE
100%PP FR
Altezza/Width: 140cm
Peso/Weight: 530 gr/mtl
Martindale: 40.000 giri/cycles
Indoor and Outdoor
Saltwater resistant



5X4 cm

E03



E05



E03



E01

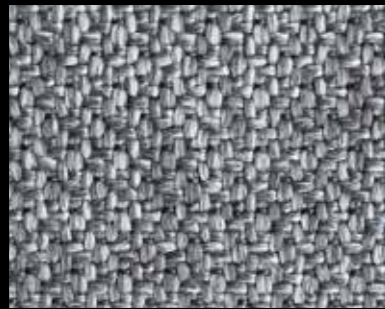


12,3X14,3 cm

E02



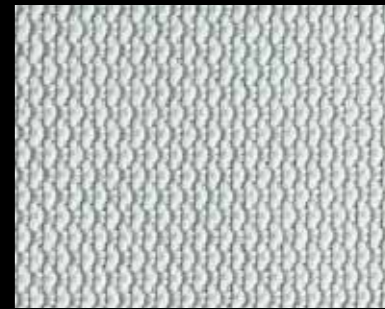
E05



E10



E04



E04



E09



E08

CAPRI

CAT. ELITE
100%PP FR
Altezza/Width: 140cm
Peso/Weight: 530 gr/mtl
Martindale: 40.000 giri/cycles
Indoor and Outdoor
Saltwater resistant

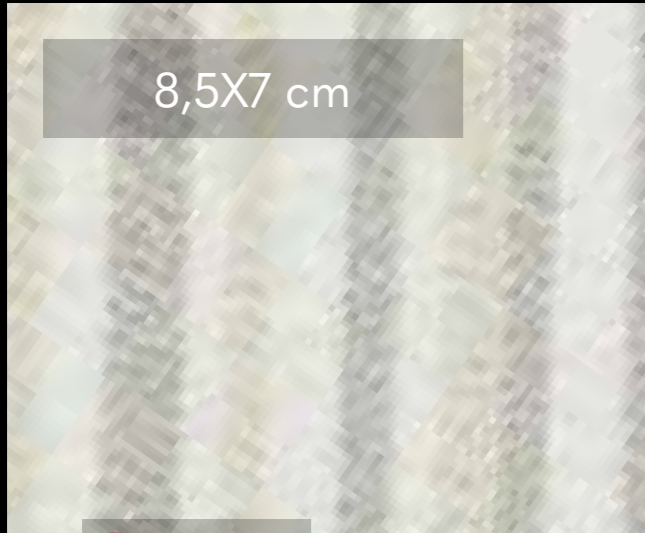


E01

TOSCONOVA

15,5X15,5 cm

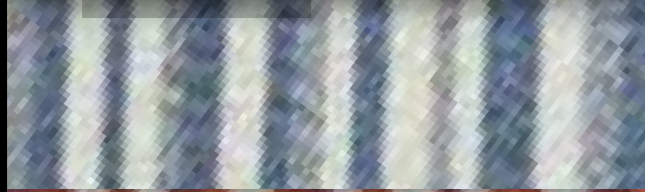




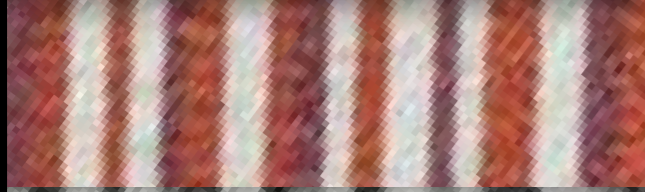
VERSILIA
E01



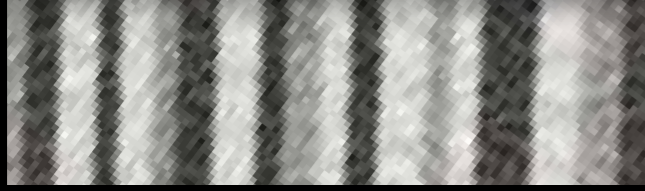
VERSILIA
E03



VERSILIA
E02



VERSILIA
E04



VERSILIA
E05



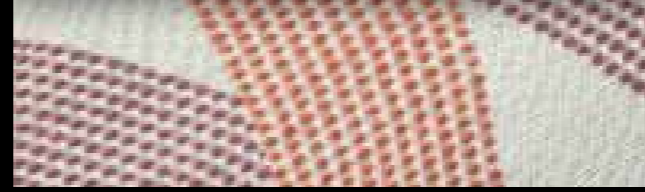
PANAREA
E01



PANAREA
E03



PANAREA
E02



PANAREA
E04

VERSILIA

CAT. ELITE
62%PP FR - 38%PL FR
Altezza/Width: 140cm
Peso/Weight: 395 gr/mtl
Martindale: 20.000 giri/cycles
Indoor and Outdoor
Saltwater resistant



PANAREA

CAT. ELITE
67%PP FR - 33%PL FR
Altezza/Width: 140cm
Peso/Weight: 435 gr/mtl
Martindale: 20.000 giri/cycles
Indoor and Outdoor
Saltwater resistant

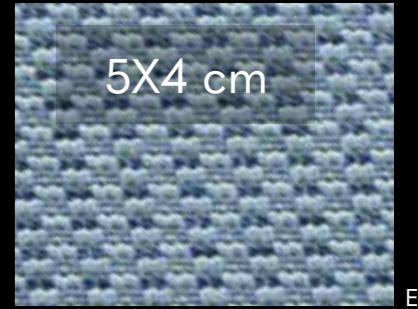


ELBA

CAT. ELITE
90%PP FR - 10%PL FR
Altezza/Width: 140cm
Peso/Weight: 495 gr/mtl
Martindale: 30.000 giri/cycles
Indoor and Outdoor
Saltwater resistant



E01



E02



E03



E05



E04