

**MATERIALS**  
MATERIALES

**2021**

*punt*

WOODEN FINISHES/ ACABADOS DE MADERA



WHITE LACQUERED OAK  
ROBLE LACADO BLANCO



SUPER-MATT OAK  
ROBLE SUPER MATE



WHITENED OAK  
ROBLE BLANQUEADO



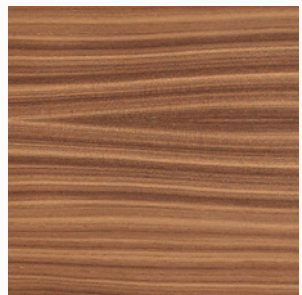
DARK GREY STAINED OAK  
ROBLE TEÑIDO GRIS OSCURO



WALNUT STAINED OAK  
ROBLE TEÑIDO NOGAL



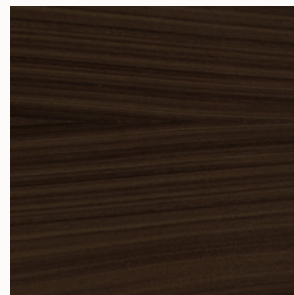
EBONY STAINED OAK  
ROBLE TEÑIDO ÉBANO



SUPER-MATT WALNUT  
NOGAL SUPER MATE

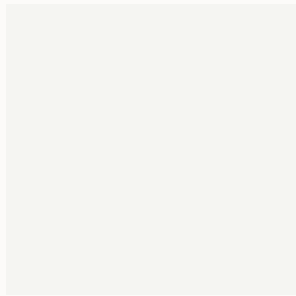


WALNUT STAINED WALNUT  
NOGAL TEÑIDO NOGAL



DARK STAINED WALNUT  
NOGAL TEÑIDO OSCURO

TEXTURIZED LACQUERED / LACADOS TEXTURIZADOS



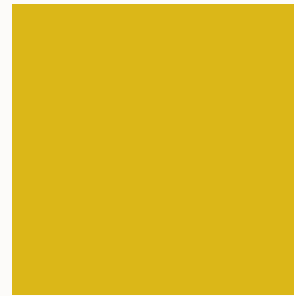
WHITE  
BLANCO



BLACK  
NEGRO



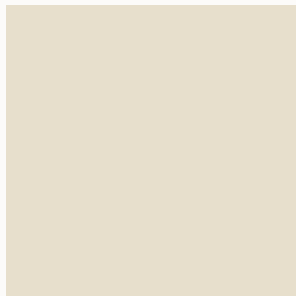
SAND  
ARENA



MUSTARD  
MOSTAZA



ROSE



CREAM  
CREMA



BRONZE  
BRONCE

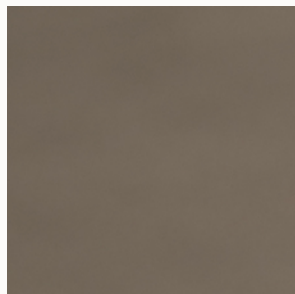


ANTHRACITE  
ANTRACITA

METALLIC LACQUERED / LACADOS METALIZADOS



GOLD  
ORO



BRONZE  
BRONCE

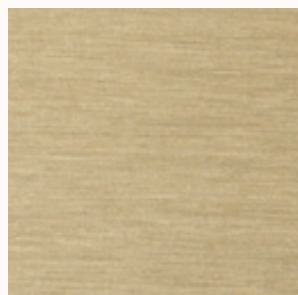


COOPER  
COBRE

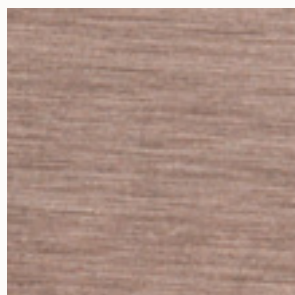


ROSE  
ROSE

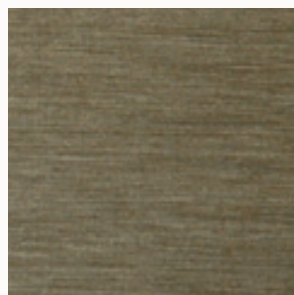
ANODISED ALUMINIUM / ALUMINIO ANODIZADO



GOLD  
ORO



PALE ROSE  
PALE ROSE

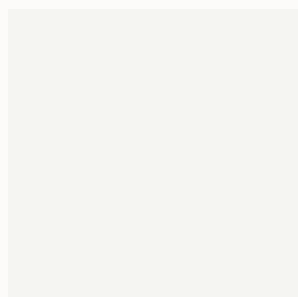


BRONZE  
BRONZE



BLACK  
NEGRO

EPOXY LACQUERED / LACADO EPOXI



WHITE  
BLANCO



BLACK  
NEGRO



BRONZE  
BRONZE

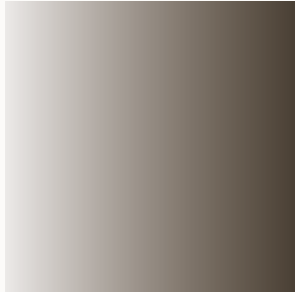


NÍQUEL NEGRO  
BLACK NICKEL

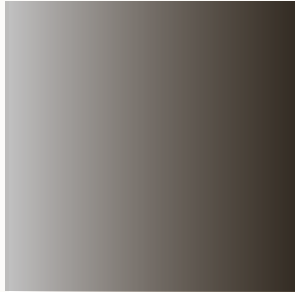


GOLD  
ORO

MIRROR, LACQUERED GLASS & FUME GLASS /  
ESPEJO, VIDRIO LACADO Y CRISTAL FUMÉ



BRONZE MIRROR  
ESPEJO BRONCE



GRAY MIRROR  
ESPEJO GRIS



BLACK GLASS  
VIDRIO NEGRO

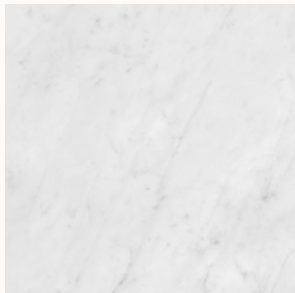


BRONZE GLASS  
VIDRIO BRONCE

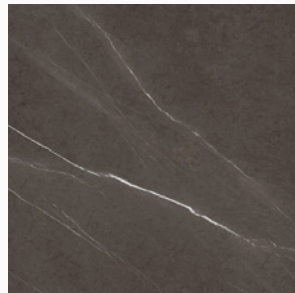


BRONZE FUME GLASS  
CRISTAL FUME BRONCE

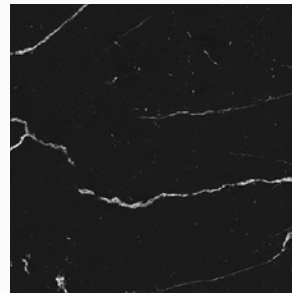
MARBLE / MARMOL



CARRARA



PIETRA GREY

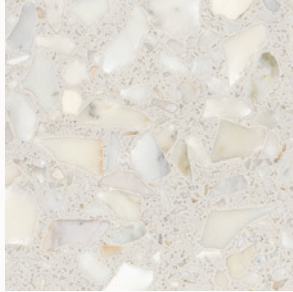


MARQUINA

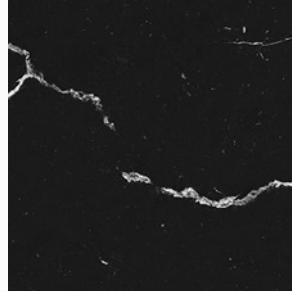
NEOLITH FOR HPW TABLE/ NEOLITH PARA MESA HPW



CALACATTA GOLD

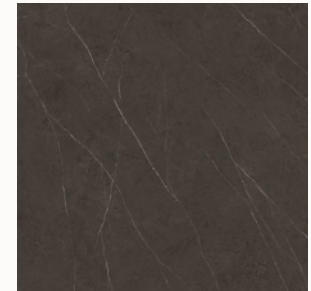


RETROSTONE



MARQUINA

XTONE BY PORCELANOSA FOR MALMÖ/  
XTONE PARA MALMÖ



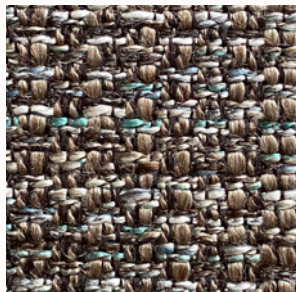
LIEM DARK

**FABRIC COLLECTION**  
COLECCIÓN DE TEXTILES

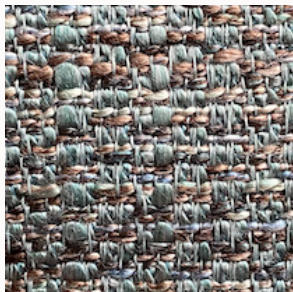
**2021**

*punt*

LINTERNO RUBENS. G2



COL 03



COL 05



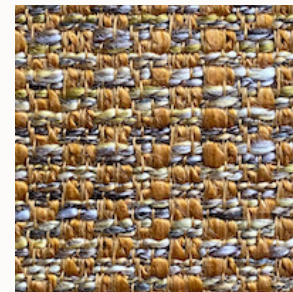
COL 01



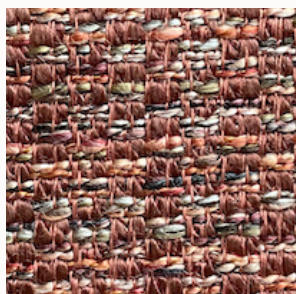
COL 02



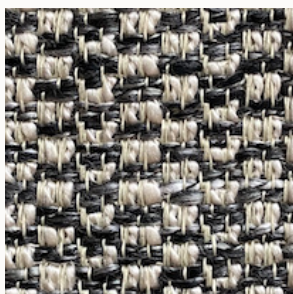
COL 12



COL 10



COL 07



COL 15



## SPRADLING VALENCIA



PRALINE 0001



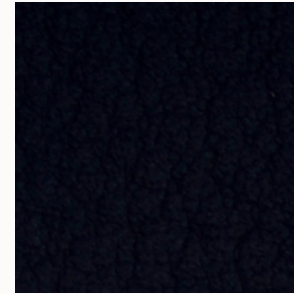
WEISS 8032



LEINEN 1049



GRAPHITE 4003



MARINE 3068



SCHWARZ 9035



AUSTER 4040



TAUPE 0034

Para más información / For more information:  
<https://www.spradling.eu/es/colecciones/valencia>

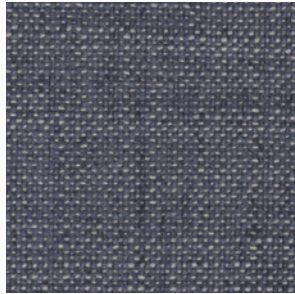
CREVIN. G2



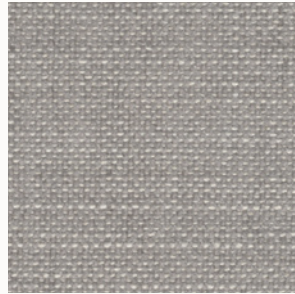
MATISS 95



MATISS 53



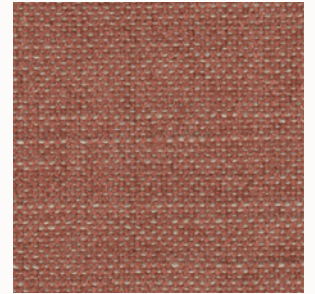
MATISS 45



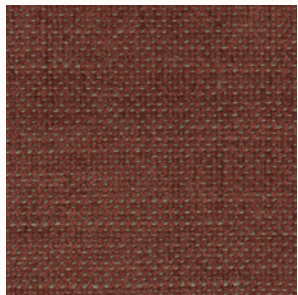
MATISS 54



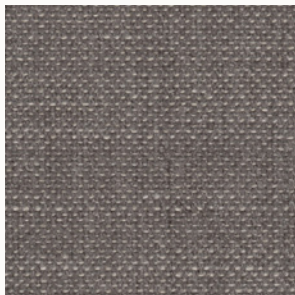
MATISS 05



MATISS 60



MATISS 22



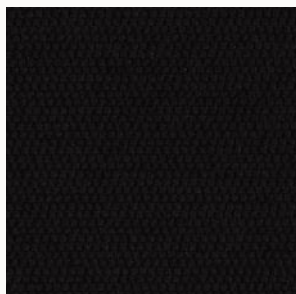
MATISS 52



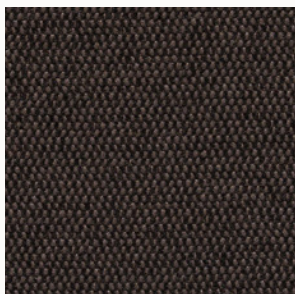
MATISS 07

Para más información / For more information:  
<https://www.crevin.com/es/detail/matiss>

## KVADRAT. G2



MESSENGER 29



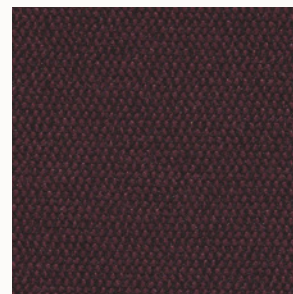
MESSENGER 76



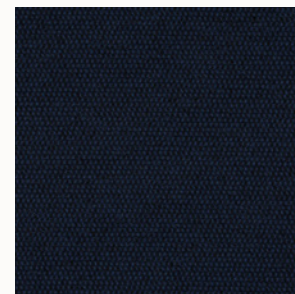
MESSENGER 81



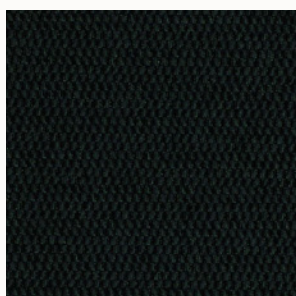
MESSENGER 78



MESSENGER 66



MESSENGER 86



MESSENGER 08



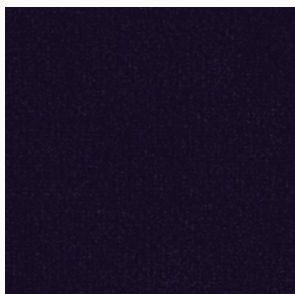
MESSENGER 58

Para más información / For more information:  
<https://www.kvadrat.dk/en/products/upholstery/458640-messenger-5>

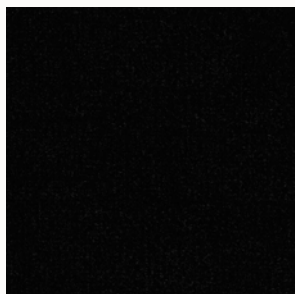
TEXTAAFOAM. G2



SEVEN 149



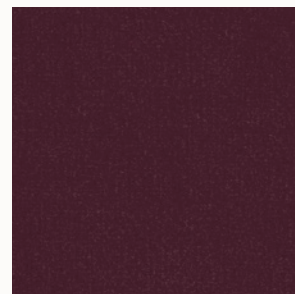
SEVEN 178



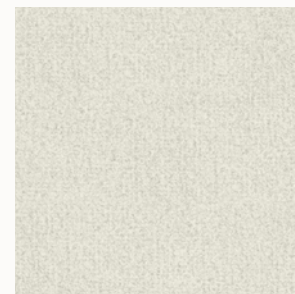
SEVEN 169



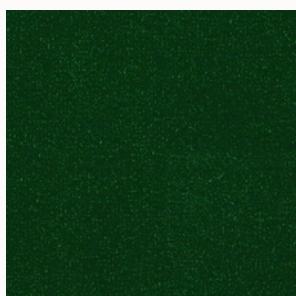
SEVEN 67



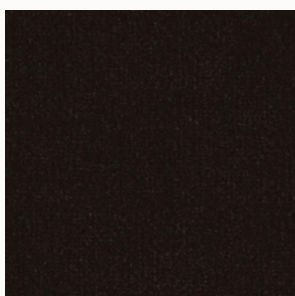
SEVEN 39



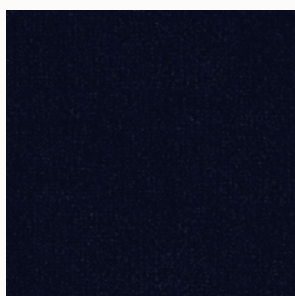
SEVEN 101



SEVEN 162



SEVEN 123



SEVEN 48

Para más información / For more information:  
<https://textaafoam.eu/fabrics/>

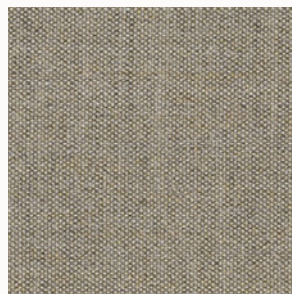
## KVADRAT. G3



REMIX 383



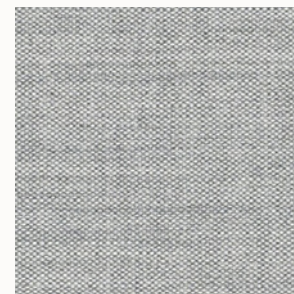
REMIX 223



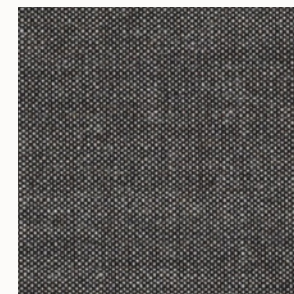
REMIX 233



REMIX 612



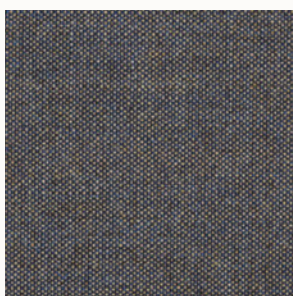
REMIX 123



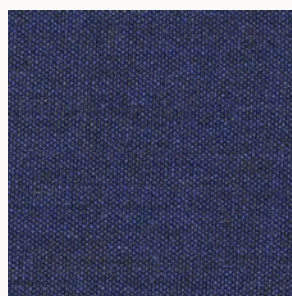
REMIX 152



REMIX 173



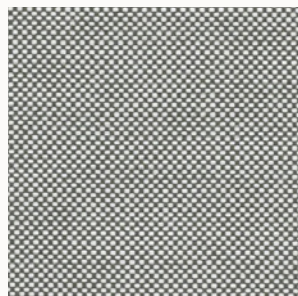
REMIX 852



REMIX 773

Para más información / For more information:  
<https://www.kvadrat.dk/en/products/upholstery/2968-remix-3>

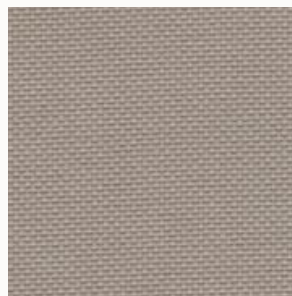
## KVADRAT. G3



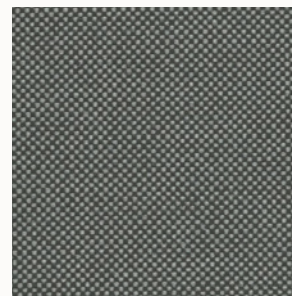
FIELD 132



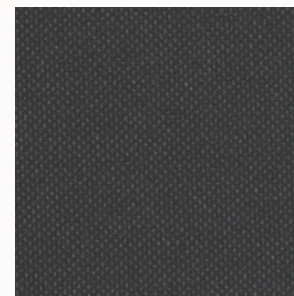
FIELD 222



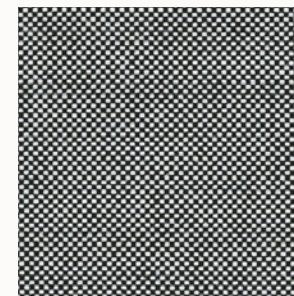
FIELD 233



FIELD 182



FIELD 192



FIELD 142



FIELD 693



FIELD 782

Para más información / For more information:  
<https://www.kvadrat.dk/en/products/upholstery/5298-field-2>

## KVADRAT. G 4



SAVANNA 122



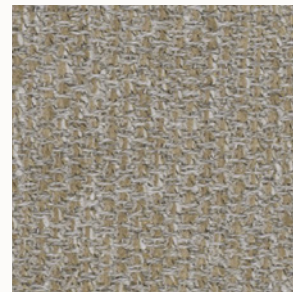
SAVANNA 152



SAVANNA 192



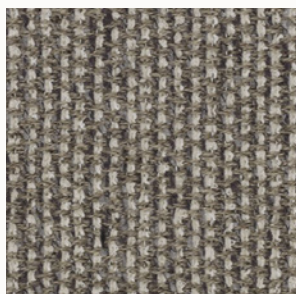
SAVANNA 262



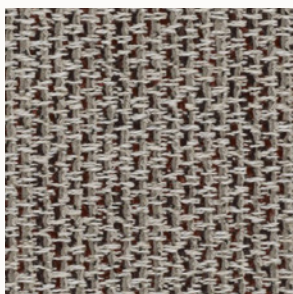
SAVANNA 222



SAVANNA 202



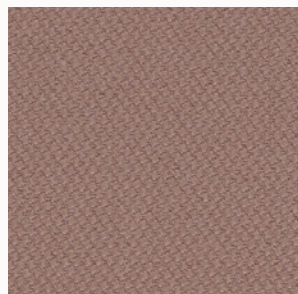
SAVANNA 242



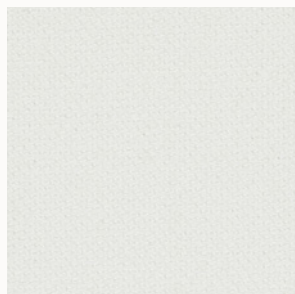
SAVANNA 622

Para más información / For more information:  
<https://www.kvadrat.dk/en/products/upholstery/8567-savanna>

KVADRAT. G5



STEELCUT 2 605



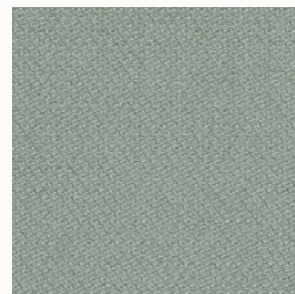
STEELCUT 2 110



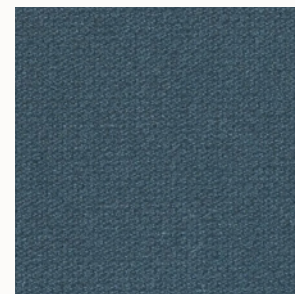
STEELCUT 2 220



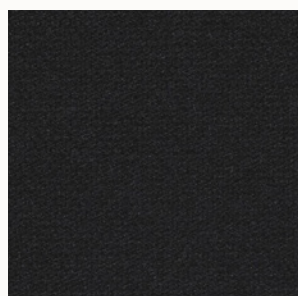
STEELCUT 2 240



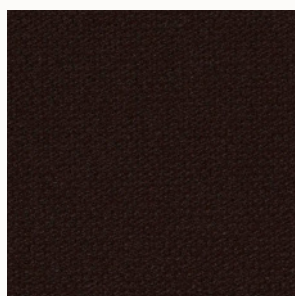
STEELCUT 2 160



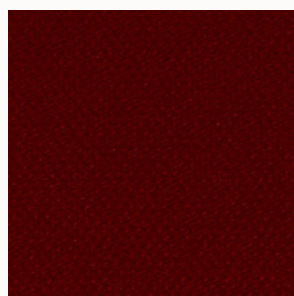
STEELCUT 2 780



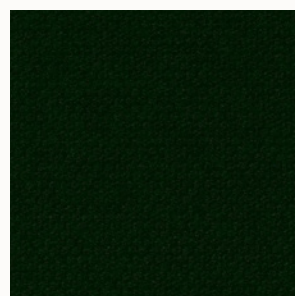
STEELCUT 2 190



STEELCUT 2 695



STEELCUT 2 615



STEELCUT 2 975

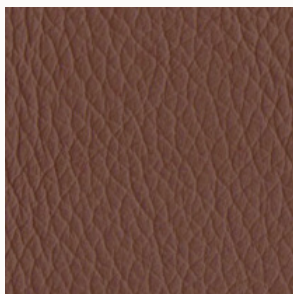
Para más información / For more information:  
<https://www.kvadrat.dk/en/products/upholstery/2223-steelcut-2>



## LEATHER. G5



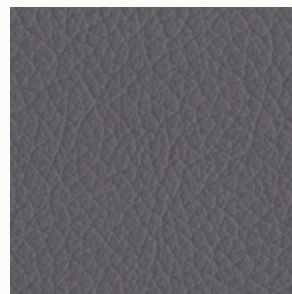
LEATHER 121



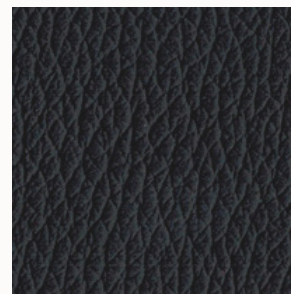
LEATHER 115



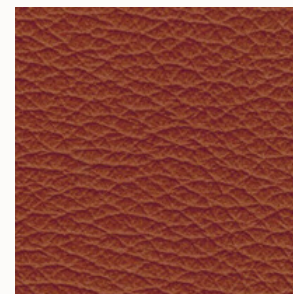
LEATHER 179



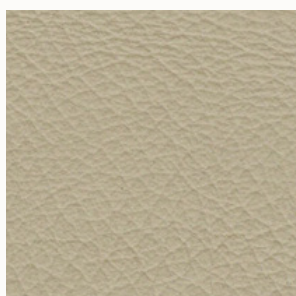
LEATHER 119



LEATHER 103



LEATHER 117



LEATHER 102



LEATHER 124

Para más información / For more information:  
<http://www.anticcuir.com/piel-standard-serie-100/>

## MODELS, FINISHES AND COLOURS

Here in PUNT we work constantly on the improvement of our products so we reserve the right to amend the measurements, materials, colours, etc. of our products with the aim of improving their quality, service, strength or price. If the products that you have ordered present some variation with respect to our current catalogue and prizes, we will inform you previously to check that you are still interested.

**Finishes:** All the finishes that we offer (natural, stained or lacquered wood, lacquered or anodised metal), even though they are protected, can gradually change their original colour over time due to sunlight exposure. Wood boards and wood pieces, because of their natural origin, present different and non-homogeneous patterns and tones. In PUNT we select each element of a piece of furniture to make these differences aesthetically pleasing.

**Colours:** The actual appearance of the nice colours of our products may differ slightly from the ones you have seen on a screen or a catalogue.

## FURNITURE CLEANING AND MAINTENANCE

For a proper preservation, the piece of furniture must be kept in a dry space. You must remove any spillage or stain immediately so it doesn't penetrate or damage the protective varnish layer. Every furniture material must be wiped with slightly damp non-abrasive cloths or cleaned with non-acid cleaning agents except paint thinners such as acetone. You mustn't use cleaning agents containing alcohol on wood with a water-based coating. After cleaning, dry the surface with a dry cloth.

## MODELOS, ACABADOS Y COLORES

En PUNT trabajamos continuamente en la mejora de los productos por lo que nos reservamos el derecho a rectificar dimensiones, materiales, colores, etc, de los mismos con el fin de mejorar la calidad, prestación, solidez o precio. Si los productos que has solicitado incorporan algún cambio respecto al catálogo o tarifa vigente, te lo comunicaremos previamente para que nos confirmes que sigues interesado en los mismos.

**Acabados:** Todos los acabados que te ofrecemos, ya sean maderas naturales, teñidas o lacadas; metales lacados o anodizados, aún protegidos, pueden ir corrigiendo su color original con el paso del tiempo y la exposición a la luz solar. Las maderas, por su origen natural, presentan mallas y tonos no homogéneos de un tablero a otro y a una pieza maciza. En PUNT seleccionamos para ti cada pieza para que esas diferencias, dentro de un mismo mueble, sean agradables.

**Colores:** Puede que nuestros bonitos colores una vez los aprecies en la realidad, no sean exactamente iguales a los que puedas haber visto en una pantalla o en un catálogo.

## MANTENIMIENTO Y LIMPIEZA DE MUEBLES

Para una correcta conservación del mueble debes mantenerlo en un espacio no húmedo. Debes retirar cualquier vertido o mancha de forma inmediata para que no atraviese o dañe la capa de barniz protectora. Para cualquiera de los materiales del mueble debes utilizar paños no abrasivos ligeramente humedecidos o con productos de limpieza que no sean ácidos ni disolventes de pinturas como la acetona. En las maderas acabadas al agua nunca utilices productos de limpieza con contenido en alcohol. Tras limpiar la superficie sécala con un paño seco.

***punt***

*punt*