

BELLAVITA
 BELLAVITA LUXURY
VELVET
 COLLECTION
 FABRIC



N 82000
 67%VI 17%SE 16%CO
 140 cm
 length
 H. 35 x L. 49,5 cm



N 82004
 65%VI 17%SE 16%CO
 140 cm
 length
 H. 35 x L. 49,5 cm



N 82006
 65%VI 17%SE 16%CO
 140 cm
 length
 H. 35 x L. 49,5 cm

BELLAVITA
 BELLAVITA LUXURY
VELVET
 COLLECTION
 SILK



M 81300
 100%SE
 140 cm
 length
 H. 72 x L. 69 cm



N 82002
 91%SE 9%LAME'
 140 cm
 length
 H. 72 x L. 67,5 cm

BELLAVITA
 BELLAVITA LUXURY
VELVET
 COLLECTION
 FABRIC



F 76008
 10%SE 40%VI 50%PL
 280 cm
 length
 H. 71 x L. 62 cm



F 76012
 10%SE 40%VI 50%PL
 280 cm
 length
 H. 71 x L. 62 cm



F 76013
 10%SE 40%VI 50%PL
 280 cm
 length
 H. 71 x L. 62 cm



F 76018
 10%SE 40%VI 50%PL
 280 cm
 length
 H. 71 x L. 62 cm

BELLAVITA
BELLAVITA LUXURY
VELVET
COLLECTION
FABRIC

Code

Composition

Height

Direction

Rapport



F 76022

10%SE 40%VI 50%PL

280 cm

length

H. 70 x L. 79,5 cm



F 76023

10%SE 40%VI 50%PL

280 cm

length

H. 70 x L. 79,5 cm



F 76028

10%SE 40%VI 50%PL

280 cm

length

H. 70 x L. 79,5 cm



F 76038

10%SE 40%VI 50%PL

280 cm

length

H. 70 x L. 79,5 cm

BELLAVITA
BELLAVITA LUXURY
VELVET
COLLECTION
FABRIC

Code

Composition

Height

Direction

Rapport



H 78210

80%CO 20%PA

138 cm

length

H. 36 x L. 46 cm



H 78212

80%CO 20%PA

138 cm

length

H. 36 x L. 46 cm



H 78310

80%CO 20%PA

138 cm

length

H. 34,5 x L. 39,5cm



H 78312

80%CO 20%PA

138 cm

length

H. 34,5 x L. 39,5cm

BELLAVITA
BELLAVITA LUXURY
VELVET
COLLECTION
FABRIC

Code

Composition

Height

Direction

Rapport



H 78050

56%CO 44%PL

140 cm

length

H. 44 x L. 15,5 cm



M 81000

22%PL 26%CO 47%PU 5%VI

140 cm

length

H. 33 x L. 23,5 cm



G 77170

56%CO 44%PL

140 cm

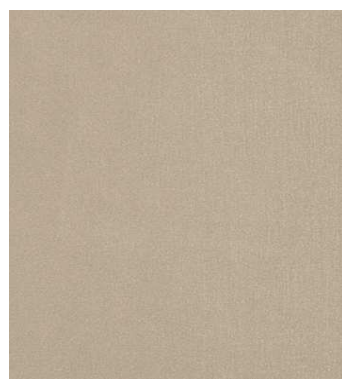
length

H. 21,5 cm

BELLAVITA
 BELLAVITA LUXURY
VELVET
 COLLECTION
 FABRIC



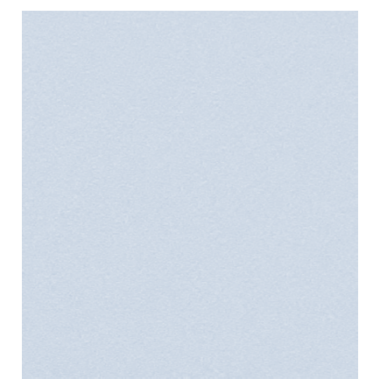
D 74210
 56%CO 44%PL
 300 cm
 -
 -



D 74212
 56%CO 44%PL
 300 cm
 -
 -



E 75202
 10%SE 40%VI 50%PL
 280 cm
 -
 -

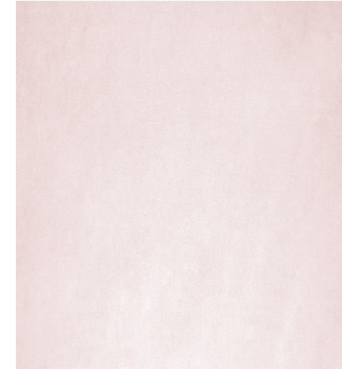


E 75203
 10%SE 40%VI 50%PL
 280 cm
 -
 -

BELLAVITA
 BELLAVITA LUXURY
VELVET
 COLLECTION
 FABRIC



E 75208
 10%SE 40%VI 50%PL
 280 cm
 -
 -



E 75218
 10%SE 40%VI 50%PL
 280 cm
 -
 -



H 78200
 80%CO 20%PA
 138 cm
 -
 -



H 78300
 80%CO 20%PA
 135 cm
 -
 -

BELLAVITA
 BELLAVITA LUXURY
VELVET
 COLLECTION
 QUILTED

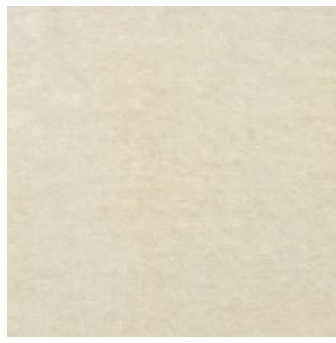


H 78150
 56%CO 44%PL - padding 100%PL
 135 cm
 -
 H. 15 x L. 15 cm

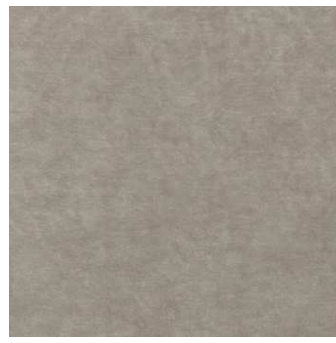


H 78152
 56%CO 44%PL - padding 100%PL
 135 cm
 -
 H. 15 x L. 15 cm

BELLAVITA
BELLAVITA
LUXURY
VELVET
COLLECTION
VELVET



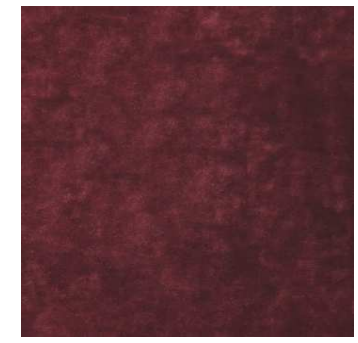
G 77501
85%VI 15%CO
138 cm
-
-
100.000 cycles



G 77502
85%VI 15%CO
138 cm
-
-
100.000 cycles

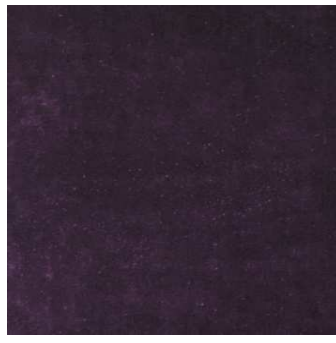


G 77503
85%VI 15%CO
138 cm
-
-
100.000 cycles

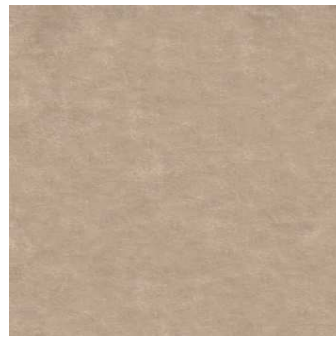


G 77505
85%VI 15%CO
138 cm
-
-
100.000 cycles

BELLAVITA
BELLAVITA
LUXURY
VELVET
COLLECTION
VELVET



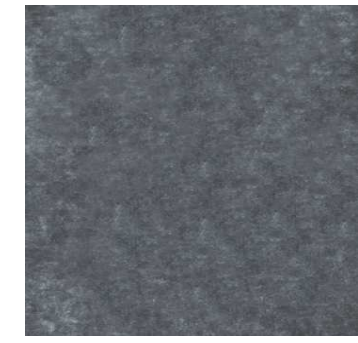
G 77506
85%VI 15%CO
138 cm
-
-
100.000 cycles



G 77508
85%VI 15%CO
138 cm
-
-
100.000 cycles



G 77509
85%VI 15%CO
138 cm
-
-
100.000 cycles



G 77510
85%VI 15%CO
138 cm
-
-
100.000 cycles

BELLAVITA
BELLAVITA
LUXURY
VELVET
COLLECTION
VELVET



G 77511
85%VI 15%CO
138 cm
-
-
100.000 cycles



G 77512
85%VI 15%CO
138 cm
-
-
100.000 cycles

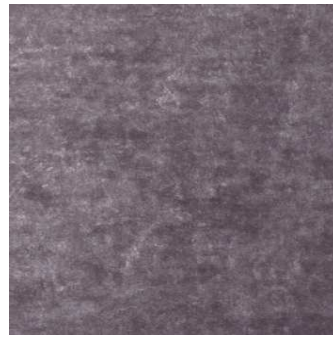
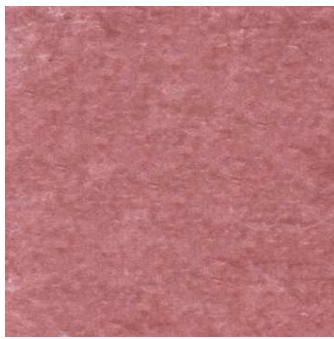


G 77513
85%VI 15%CO
138 cm
-
-
100.000 cycles



G 77515
85%VI 15%CO
138 cm
-
-
100.000 cycles

BELLAVITA
BELLAVITA
LUXURY
VELVET
COLLECTION
VELVET



Code
Composition
Height
Direction
Rapport
Martindale

G 77516
85%VI 15%CO
138 cm
-
-
100.000 cycles

G 77518
85%VI 15%CO
138 cm
-
-
100.000 cycles

BELLAVITA
BELLAVITA
LUXURY
VELVET
COLLECTION
VELVET



Code
Composition
Height
Direction
Rapport
Martindale

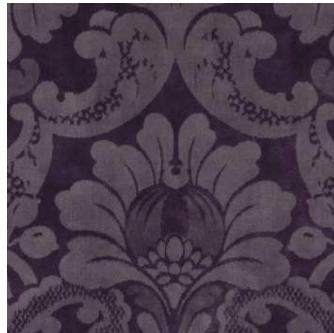
L 80501
85%VI 15%CO
138 cm
length
H. 69 x L. 55
100.000 cycles

L 80502
85%VI 15%CO
138 cm
length
H. 69 x L. 55
100.000 cycles

L 80503
85%VI 15%CO
138 cm
length
H. 69 x L. 55
100.000 cycles

L 80505
85%VI 15%CO
138 cm
length
H. 69 x L. 55
100.000 cycles

BELLAVITA
BELLAVITA
LUXURY
VELVET
COLLECTION
VELVET



Code
Composition
Height
Direction
Rapport
Martindale

L 80506
85%VI 15%CO
138 cm
length
H. 69 x L. 55
100.000 cycles

L 80508
85%VI 15%CO
138 cm
length
H. 69 x L. 55
100.000 cycles

L 80509
85%VI 15%CO
138 cm
length
H. 69 x L. 55
100.000 cycles

L 80518
85%VI 15%CO
138 cm
length
H. 69 x L. 55
100.000 cycles

BELLAVITA
 BELLAVITA LUXURY
VELVET
 COLLECTION
 VELVET



Code

Composition

Height

Direction

Rapport

Martindale

L 80553

85%VI 15%CO

138 cm

length

H. 68,5 x L. 70 cm

100.000 cycles

L 80558

85%VI 15%CO

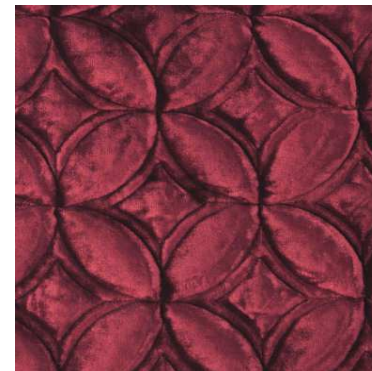
138 cm

length

H. 68,5 x L. 70 cm

100.000 cycles

BELLAVITA
 BELLAVITA LUXURY
VELVET
 COLLECTION
 QUILTED VELVET



Code

Composition

Height

Direction

Rapport

Martindale

M 81101

85%VI 15%CO - padding 100%PL

134 cm

length

H. 15 x L. 47,5 cm

100.000 cycles

M 81205

85%VI 15%CO - padding 100%PL

134 cm

-

H. 15 x L. 15 cm

100.000 cycles

NB:

*il cambio di aspetto avviene a 20.000 giri

*questo tipo di trapuntatura può essere fatta a richiesta su qualsiasi tessuto

NB:

* Изменение внешнего вида происходит после 20,000 проходов

**Этот тип стежка может быть воспроизведен по просьбе на любой ткани

Avvertenze:

- I rapporti sono espressi in altezza pezza.
- I colori di questo file sono da considerarsi solo indicativi.
- Ci riserviamo il diritto di apportare qualunque modifica senza preavviso.
- I tessuti possono presentare leggere differenze di colore da un lotto di tintura all'altro.
- La pulitura dei rivestimenti tessili deve essere eseguita da un servizio professionale specializzato nel settore.
- Maggiorazione del 20% per tagli inferiori a 200 cm.
- Il taglio minimo è di 50 cm.
- I tagli devono essere esclusivamente multipli di 50 cm.

Advices:

- The rapports are expressed in the height of the fabric.
- The colors represented in this document are merely indicative.
- We reserve the right of making any changes without previous notice.
- The fabrics can have small color differences from one dyeing batch to another one.
- The cleaning of the textile coverings have to do from a professional service specializing in the field.
- Increase of 20% for cuts of less than 200 cm.
- The minimum cut is 50 cm.
- The cuts must be exclusively multiples of 50 cm.

Предупреждения:

- Раппорт – (Повторение ткани) указан сверху- вниз.
- Цвета этого файла не отображают на сто процентов настоящие оттенки ткани .
- Мы оставляем за собой право вносить изменения без предварительного предупреждения.
- Ткань может незначительно отличаться цветом одной партии от другой.
- Чистка текстильных покрытий должна быть осуществлена профессиональными специализированными центрами.
- Для отрезов менее 200 см наценка 20%.
- Минимальный отрез 50 см.
- Все отрезки должны быть исключительно кратными 50 см.N.B.