

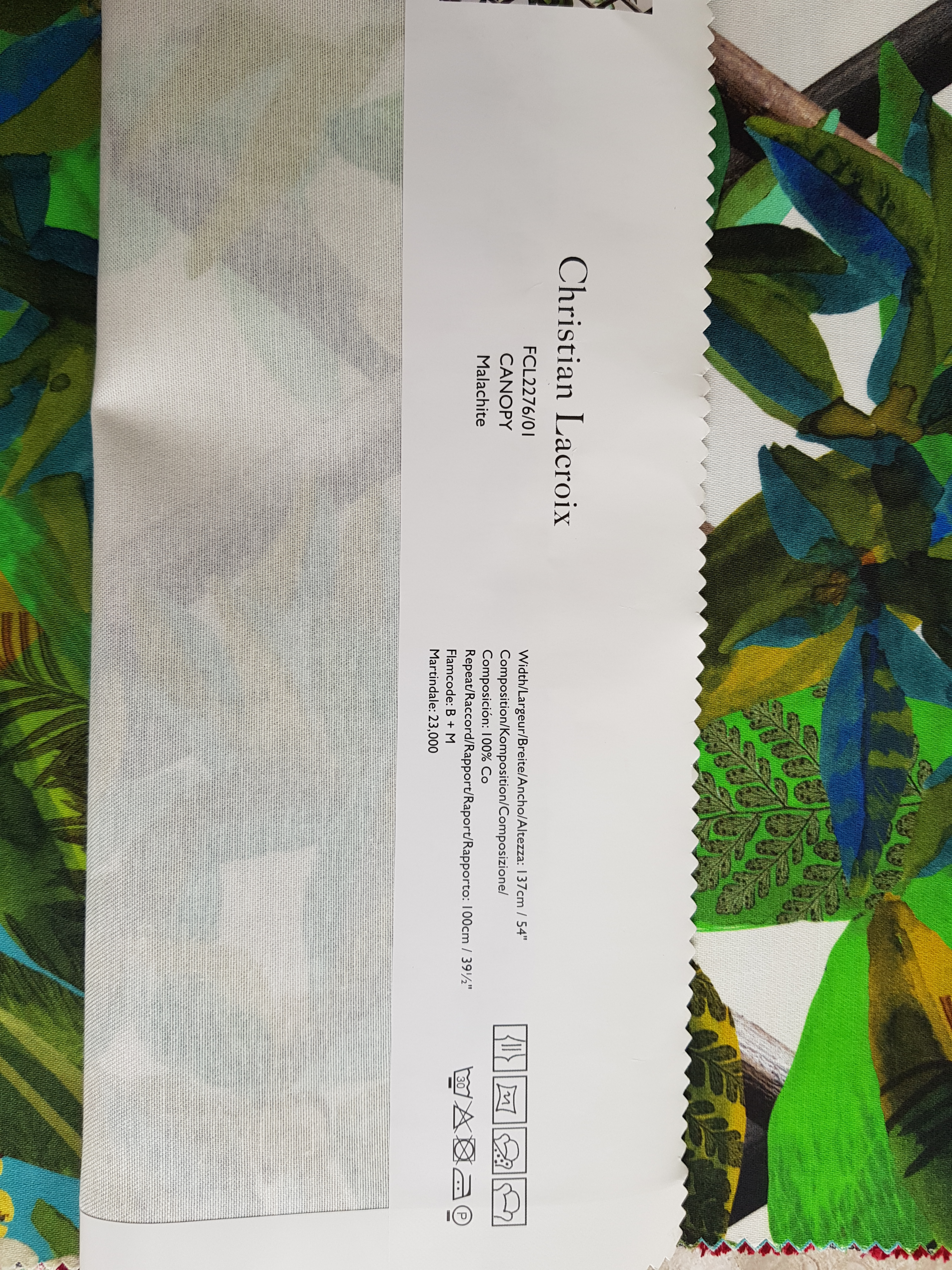
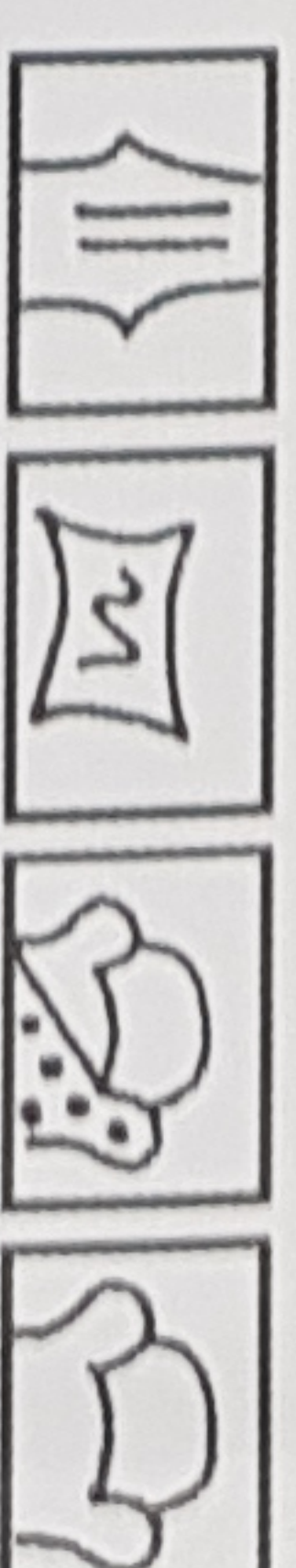




# Christian Lacroix

FCL2276/01  
CANOPY  
Malachite

Width/Largeur/Breite/Ancho/Altezza: 137cm / 54"  
Composition/Komposition/Composizione/  
Composición: 100% Co  
Repeat/Raccord/Rapport/Rapor/Rapporto: 100cm / 39 1/2"  
Flamcode: B + M  
Martindale: 23,000







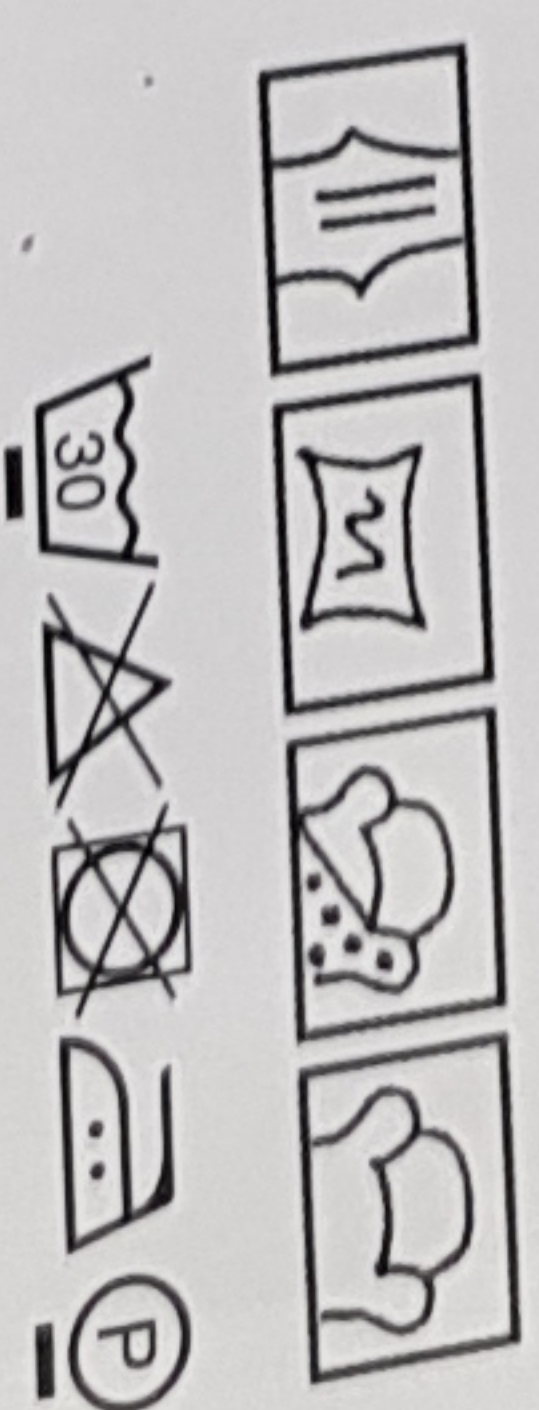




# Christian Lacroix

FCL2276/04  
CANOPY  
Turquoise

Width/Largeur/Breite/Ancho/Altezza: 137 cm / 54"  
Composition/Komposition/Composizione/  
Compositiön: 100% Co  
Repeat/Raccord/Rapport/Raport/Rapporto: 100cm / 39 1/2"  
Flamcode: B + M  
Martindale: 23,000









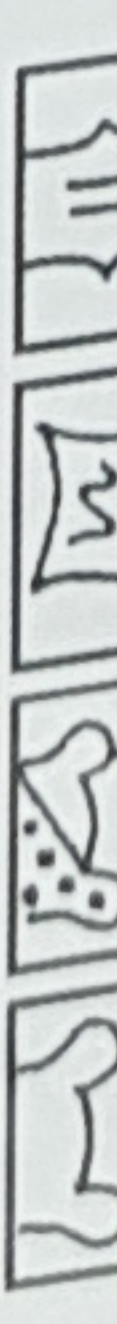
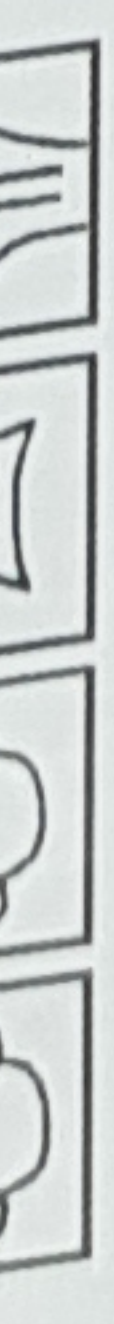


Christian Lacroix

FCL2282/04

SOFT PANTIGRE

Papaye



Width/Largeur/Breite/Ancho/Altezza: 138cm / 54 1/4"  
Composition/Komposition/Composizione/  
Composición: 56% Pl 44% Vl  
Repeat/Raccord/Rapport/Raport/Rapporto: 70cm / 27 1/2"  
Flamcode: K  
Martindale: 40,000











# Christian Lacroix

FCL2332/01  
MARIPOSA  
Perroquet

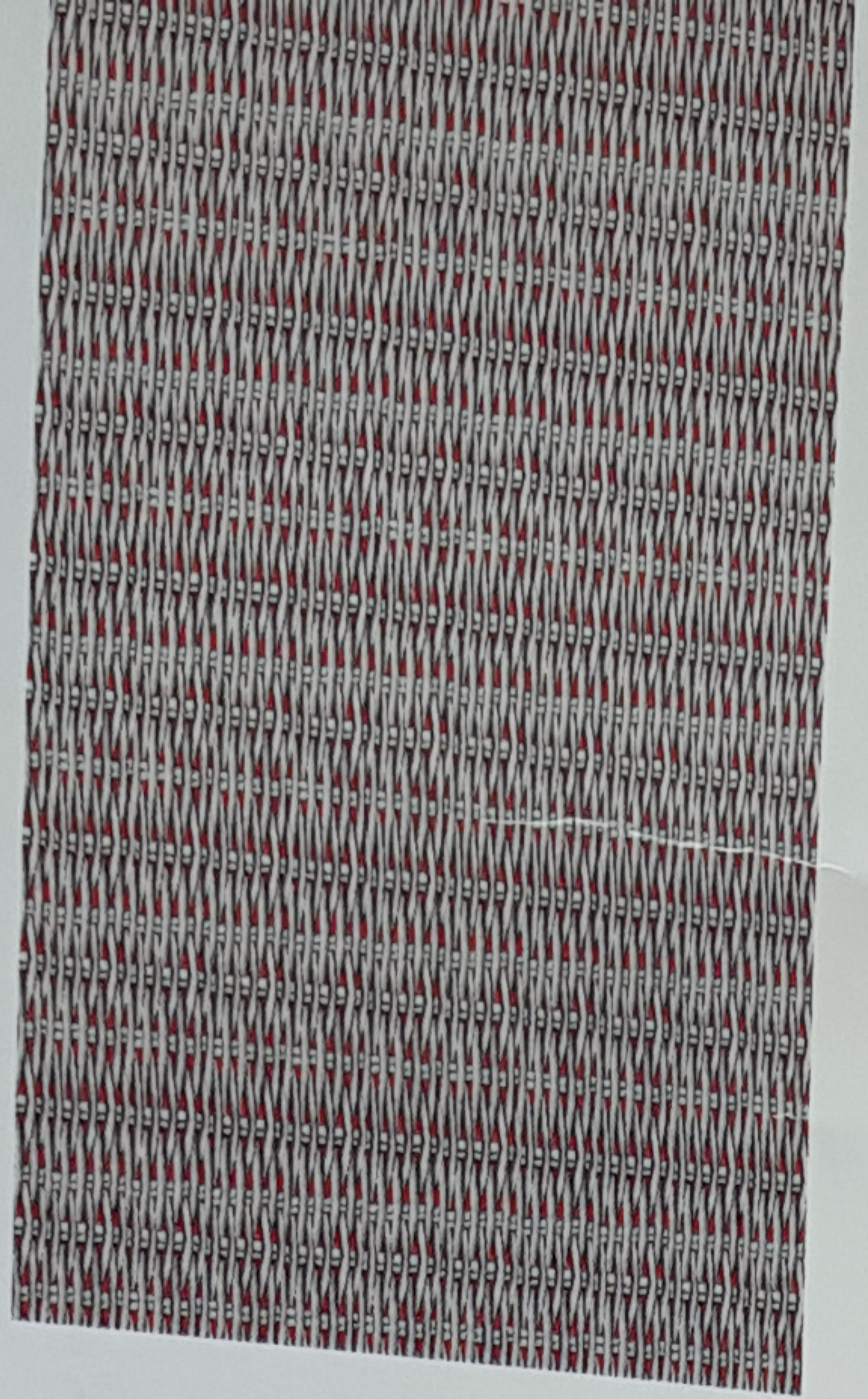
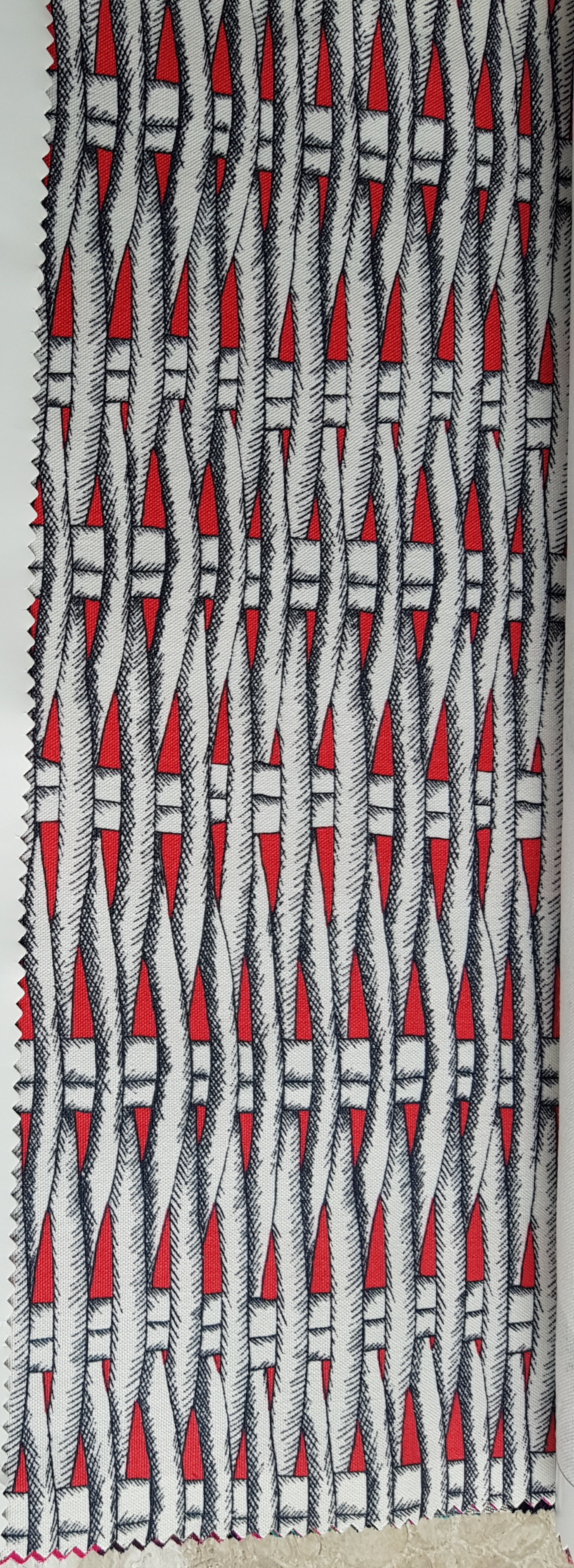
Width/Largeur/Breite/Ancho/Altezza: 137cm / 54"  
Composition/Komposition/Composizione/  
Composición: 100% Co  
Repeat/Raccord/Rapport/Raport/Rapporto: 76cm / 30"  
Flamcode: B + M  
Martindale: 23,000











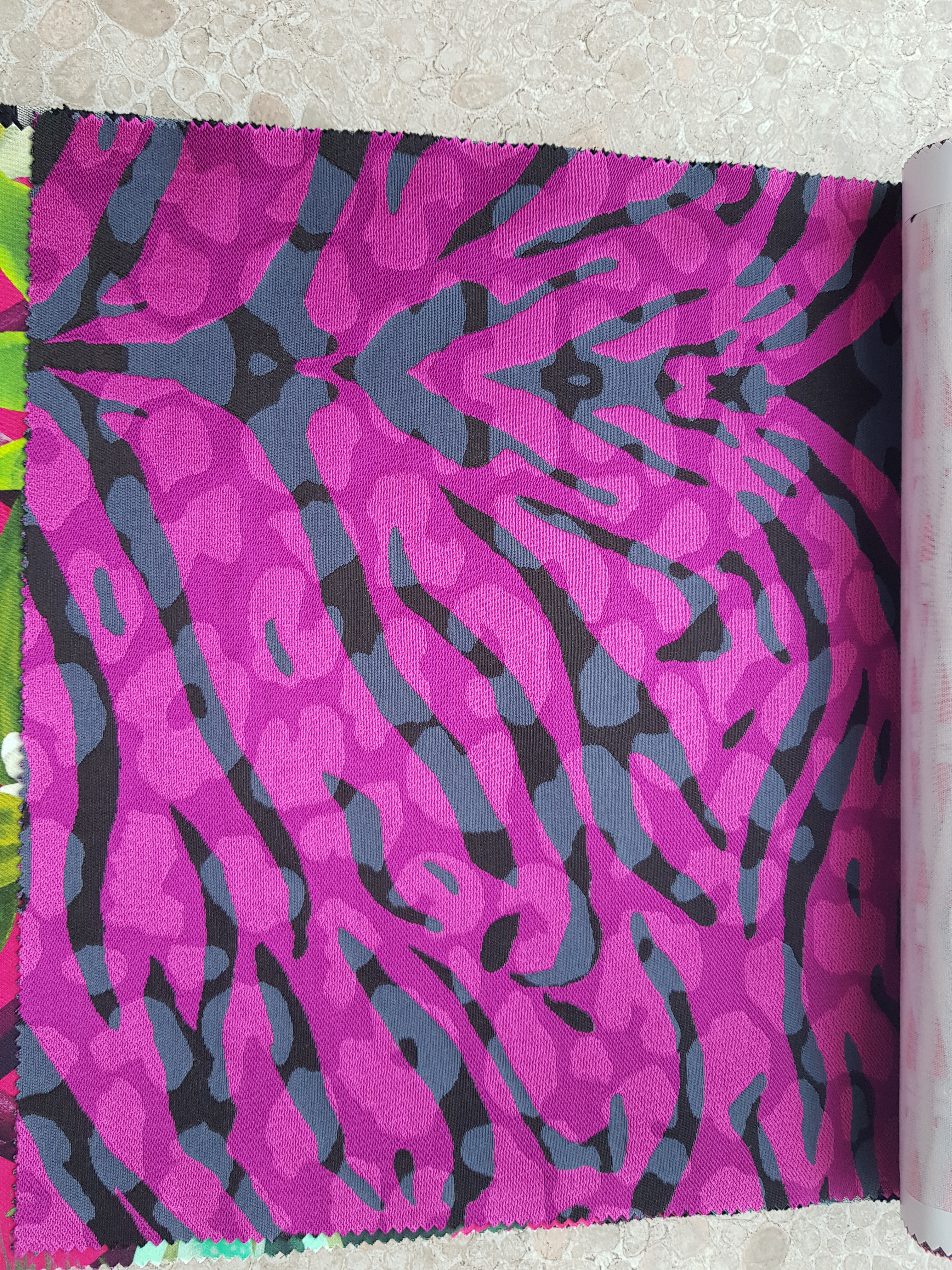
# Christian Lacroix

FCL2278/02  
BARBADE  
Papaye

Width/Largeur/Breite/Ancho/Altezza: 137 cm / 54"  
Composition/Komposition/Composizione/  
Compositión: 100% Co  
Repeat/Raccord/Rapport/Raport/Rapporto: 7 cm / 2 3/4"  
Flamcode: B + M  
Martindale: 30,000







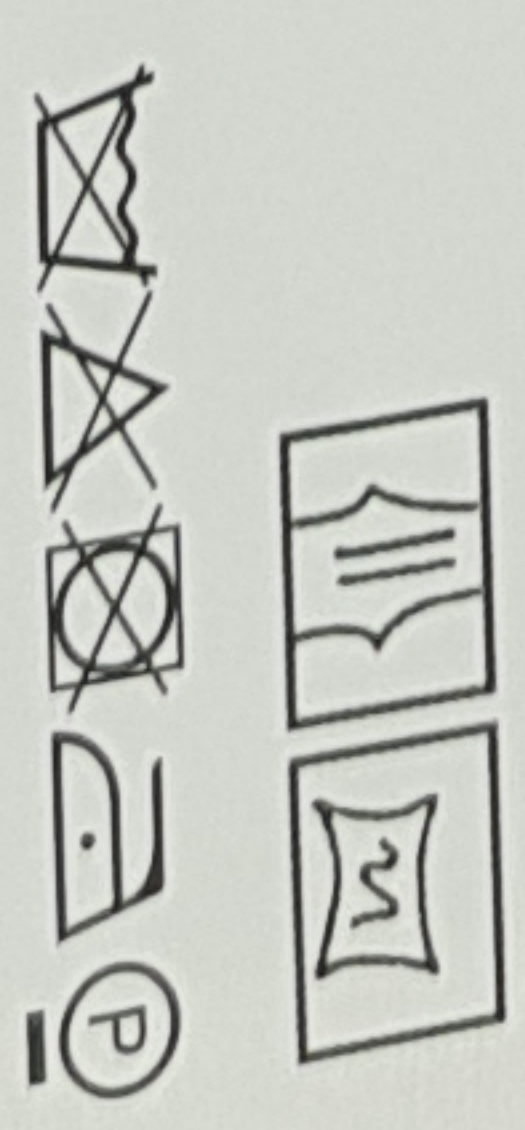




# Christian Lacroix

FCL2284/02  
PANTIGRE  
Grenade

Width/Largeur/Breite/Ancho/Altezza: 142cm / 56"  
Composition/Komposition/Composizione/  
Composición: 93% Vi 7% Si  
Repeat/Raccord/Rapport/Raport/Rapporto: 70cm / 27 1/2"  
Flamcode: Z











# Christian Lacroix

FCL22276/02  
CANOPY  
Grenade

Width/Largeur/Breite/Ancho/Altezza: 137 cm / 54"  
Composition/Komposition/Composizione/  
Composición: 100% Co  
Repeat/Raccord/Rapport/Raport/Rapporto: 100cm / 39 1/2"  
Flamcode: B + M  
Martindale: 23,000

